

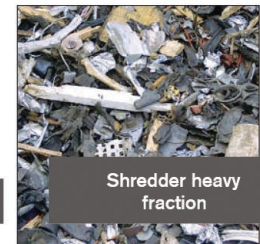
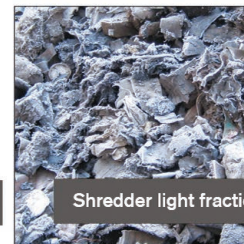
# TDS 825

## Terex Double Shaft Low Speed Shredder



The TDS 825 Low Speed Shredder processes difficult material such as:

Wood waste, pallets, domestic and industrial and bulky waste, cable drums, tires, paper rolls, green waste, mattresses, and roots.





Overband Magnet

## The Terex® TDS 825 double shaft low speed shredder

All materials can be processed with the same shredding tool. For example mattresses can be crushed first followed by waste wood. It is possible to change the shredding program of the machine by pressing button and continuing the disintegration process without any stopping or delays.

Three standard programs are pre-installed for the shredding of waste wood, green waste as well as domestic, industrial and bulky waste. A fourth program can be configured by the customer for the disintegration of difficult material. Each shaft is driven by a separate hydraulic motor with separate hydraulic gear box and so it is possible to drive each shaft separately for rotation minutes and rotation direction.

TDS 825 has also solved the problem regarding wrappings of long material parts such as plastic film, airfoil, mattresses or composite panels around the shafts leading to machine blockages. The TDS 825 is equipped with a special cleaning system

avoiding these wrappings. The shafts reverse in an asynchronous manner guaranteeing the self-cleaning effect even when shredding material is difficult.

The TDS 825 has a shaft length of 8' 2". The operation is effected by a 12 channel remote control from the loading unit. The optimized sound insulation system (max 92 dBA) as well as the functional display (different languages with integrated error detection system) are standards of the base version.

The diesel driven mobile machine is on tracks with additional options (as shown in the table below). Another advantage of the TDS 825 with the diesel motor is the refined energy saving system. The machine runs with different revolution speeds depending on the charge factor achieving a diesel saving of about 25%. The TDS 825 is the ideal first shredding step in a recycling line. In this case the possible option is a separate drive unit that can be placed independently from the machine itself.

## TEREX TDS 825 SPECIFICATIONS

### Transport Dimensions

▶ Length	9600 mm	31'6"
▶ Width	3000 mm	9' 10"
▶ Height	3720 mm	12' 2"
▶ Weight	42,000 kg	92,600 lbs

### Working Dimensions

▶ Length	11300 mm	37'1"
▶ Width	2500 mm	8' 3"
▶ Feed Height	3650 mm	12'
▶ Discharge Height	3850 mm	12' 8" (product belt @ 35°)

### Shredding Unit

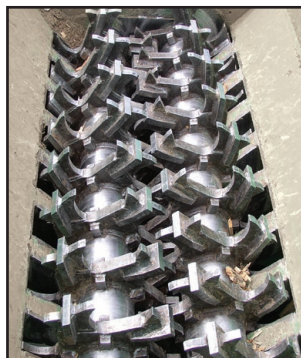
▶ Type of shredder	Twin shaft low speed	
▶ Shaft Length	2500 mm	8' 3"
▶ Shaft Diameter	900 mm	2' 11"
▶ Torque per shaft	220 000Nm	162,265 lbs/ft
▶ Tilting feeder capacity	12m <sup>3</sup>	15.7 yd <sup>3</sup>

## THE TDS 825 OFFERS UNIQUE BASIC EQUIPMENT

- ▶ Powerful hydraulic motors
- ▶ Diesel Engine 403 Kw (550 hp)
- ▶ Shredding Shafts 2
- ▶ Shredding Chamber 900 x 2.500
- ▶ Pre-welded special tools, 5 elements with 8/8 discs
- ▶ "Cleanfix" radiator
- ▶ Individual shaft and toll configuration from fine (<150 mm) to coarse (ca. 500 mm)
- ▶ Breaking bar
- ▶ IFM-display with error detection
- ▶ 4shredding programs for the processing of difficult material
- ▶ Central lubrication for rotor bearings
- ▶ 12 channel remote control
- ▶ POWER-RAM prefilter
- ▶ Sound insulation system
- ▶ Outfeed belt (hydr. adjustable)
- ▶ Overband magnet (hydr. adjustable)
- ▶ Hopper extension



12 CHANNEL REMOTE CONTROL



**PRODUCT ADVANTAGES AND MORE OPTIONS  
GUARANTEE AN IMPRESSIVE RESULTS:**

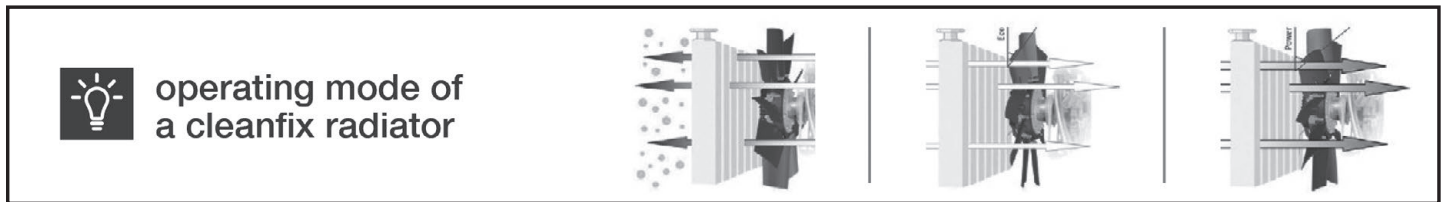
- ▶ No “wrapping” on the shafts due to developed cleaning systems
- ▶ Shredding programs (waste, wood, mattresses, special applications)
- ▶ Energy Diesel Saving System of up to 25%
- ▶ Special rotor shaft bearing and gearbox protection system
- ▶ Individually and infinitely variable adjustable shaft
- ▶ Low wear costs



**THE TDS 825 LOW SPEED SHREDDER  
DEMONSTRATES HIGH THROUGHPUT  
CAPACITIES OF UP TO 100 T/H.**



Industrial Waste	Up to 65 t/h
Bulky Waste	Up to 85 t/h
Green Waste	Up to 85 t/h
Domestic Waste	Up to 100 t/h
Waste Wood	Up to 100 t/h



\*The number and form of the tools is adjusted according to the requested final material.  
 \*\*The revolutions per minute of the shafts can be infinitely adjusted from 0 – 40 rpm/min. As both shafts are separately driven different rpm are possible. As the number of discs on the shaft and the number of tools on a disc can vary it is possible to achieve a final product size of about 0 – 500/600 mm, 0 – 350 mm, 0 – 200 mm and 0 – 150 mm.



# ENVIRONMENTAL EQUIPMENT

## CONTACT DETAILS

---

Terex Environmental Equipment  
1250 Commerce Drive  
Farwell, Michigan 48622  
USA

Toll Free: 1-800-953-5532  
Phone: 1-989-588-4295  
Fax: 1-989-588-4827  
E Mail: salesenvironmental@terex.com  
Website: www.terex.com/environmental-equipment

## SOCIAL NETWORKING

---



Become a Terex fan on Facebook by visiting  
[www.facebook.com/terexcorporation](http://www.facebook.com/terexcorporation)



Check out Terex Videos on YouTube:  
[www.youtube.com/TerexEnviroEquip](http://www.youtube.com/TerexEnviroEquip)



# WORKS FOR YOU.

The material in this document is for information only and is subject to change without notice.

Terex assumes no liability resulting from errors or omissions in this document, or from the use of the information contained herein. Due to continual product development we reserve the right to change specifications without notice. Product performance figures given in this brochure are for guidance purposes only, this information does not constitute an expressed or implied warranty or guarantee, but shows test examples. These results will vary depending on feed source and types of material being used.

Photographs are for illustrative purposes only, some or all of the machines in the illustrations may have been fitted with optional extras. Please check for details on optional extras.

Products and services listed may be trademarks, service marks or trade-names of Terex Corporation and/or its subsidiaries in the USA and other countries. All rights reserved. Terex is a registered trademark of Trade Corporation in the USA and many other countries. ©2013 Terex Corporation.