

MATERIAL HANDLER



Specifications

Operating Weight	39,242 - 41,888 lbs
Engine Output	114 hp
Reach	Up to 34.1 ft

Features

- ▶ Fuel efficient and powerful, the 114 hp turbo diesel engine enables movement of loads with speed and precision.
- ▶ Separate large-surface oil cooler helps to keep operating temperature in an acceptable range even with high utilization.
- ▶ Standard air conditioning and special features such as optional reversible fans and an optional pressurized cabin system for a variety of operating conditions.
- ▶ Operator's cabin designed for excellent visibility – it can be elevated to a maximum eye-level of 17.0 ft and is fitted with large surrounding windows.

WORKS FOR YOU.™

SPECIFICATIONS

ENGINE

Manufacturer, Model	Deutz TCD 2012 LD4 2V
Design	4-cylinder inline
Engine Control	EMR III
Type	4-stroke diesel, direct common rail fuel injection, turbocharged with charge air cooling
Engine Output	114 hp
Nominal Speed	2000 rpm
Displacement	246.4 in ³
Cooling System	Liquid intercooling with temperature-controlled fan speed
Emission Standards	EPA Tier III and COM III
Air Filter Design	Two-stage filter
Fuel Tank Capacity	85 gal

ELECTRICAL SYSTEM

Operating Voltage	24 V
Batteries	2 x 12V / 100Ah / 850A (in accordance with EN)
Lighting Set	1 x H3 floodlight on upper carriage, 1 x H3 floodlight on cab floor, turn signal and rear sidemarker lamps
Generator	11 kW DC generator with control, driven by V-belt direct from diesel engine

TRAVEL DRIVE

Hydrostatic drive through infinitely variable axial piston motor and directly mounted travel brake valves, two-speed shift gear, all-wheel drive	
Travel Speed	1 st gear Maximum 3.1 mph 2 nd gear Maximum 12.4 mph
Gradeability	Maximum 55%
Turning Radius	23.0 ft

SWING SYSTEM

Ring Gear	Internally toothed ball ring gear (double row)
Drive	Two-stage planetary gear with integrated multi-disc brake
Upper Carriage Swing Speed	0 - 8 rpm
Pivot Brake	Electrically operated

UNDERCARRIAGE

Front Axle	Planetary drive axle with integrated drum brake, rigidly mounted, maximum steering angle 30°
Rear Axle	Oscillating planetary drive rear axle with integrated drum brake and selectable oscillating axle lock
Stabilizers	4-point stabilizers, 2-point stabilizers with stabilizing blade (optional)
Tires	Solid rubber, elastic tires 8-fold 10.00-20



BRAKE SYSTEM

Service Brake	Hydraulic single-circuit braking system acting on all four wheel pairs (drum brakes)
Parking Brake	Electrically operated spring-loaded disc brake at transmission, acting on both front and rear axle

HYDRAULIC SYSTEM

REXROTH mobile hydraulic system with flow-on-demand control. Separate oil cooler, temperature-controlled fan speed. Hydraulic oil filter: Filter elements integrated in the oil tank; maintenance interval up to 3000 operating hours. Central lubrication system.	
Maximum Pump Capacity	77 gal/min
Maximum Operating Pressure	5221 psi
Hydraulic Oil Tank	79 gal

OPERATOR'S CAB

Cab: elastically supported, infinitely variable hydraulically height-adjustable with maximum eye-level of 17 ft. Large windows for optimum all-around view, windshield with pull-down sunblind that slides under cab roof, visibility panel in cab roof, sliding window in cab door, steering column height and tilt adjustable.	
Heating	Infinitely variable hot water heating with 3-speed fan, 4 adjustable defroster nozzles
Operator's Seat: Mechanically cushioned comfort-seat with integrated headrest, safety belt and lumbar support, seat heating with integrated a/c function optional. Seat position, seat inclination and seat cushion multi-adjustable in relation to position of armrests and pilot control units, allowing low fatigue operation.	
Monitoring: Ergonomic instrument layout, glare resistant. Function monitoring; automatic warning and storage of deviating operating conditions, e.g. filter pressure with warning indicator and shutdown of pilot controls, warning indicator or shutdown of pilot controls if hydraulic oil temperature limits are exceeded.	
Air Conditioning	Automatic

SAFETY INSTALLATIONS

For crane operations in accordance with EN 474-5.
Cab protection by close proximity range limiter.

OFFICIAL HOMOLOGATION

Certification in accordance with CE regulations.
--



TEREX®

EQUIPMENT

TMH320 D

ENGINE

SERIES OPTION

Exhaust gas turbocharger	•
Intercooling	•
Direct electronic fuel injection/ Common Rail	•
Automatic idle	•
Interface for engine diagnosis	•
Temperature-controlled fan drive	•

UNDERCARRIAGE

SERIES OPTION

2-speed power-shift transmission	•
4-point stabilizers	•
2-point stabilizers and stabilizer blade	•
4-point stabilizers, individually controllable	•
Stabilizer cylinders with integrated two-way check valves	•
All-wheel drive	•
Piston rod protection on stabilizer cylinders	•
Rear axle oscillating lock	•
Blade in addition to 4-point stabilizers	•
Special paint	•
Drum brakes	•
Tool box on undercarriage	•

UPPERCARRIAGE

SERIES OPTION

Electric refuelling pump	•
Lighting protection	•
Maintenance hood, actuated by gas strut, with mechanical locking device	•
Lockable cleaning access openings on radiator	•
Separate radiator system for ambient temperatures up to 122° F (50° C)	•
Separate oil cooler with temperature controlled fan drive	•
Automatic central lubrication system	•
Special paint	•
Quick-drain valve for fuel tank (supplied in tool box)	•
Quick-drain valve on hydraulic oil tank	•
Quick-drain valve on radiator	•
Quick-drain valve on engine oil-pan	•
Reversible fan for radiator and hydraulic oil cooler	•
Tool box (small) in upper carriage	•

CAB

SERIES OPTION

Lift-up skylight in cab roof	•
Operator's seat mechanically cushioned	•
Air cushioned operator's seat with headrest, safety belt and lumbar support	•
FOPS protective grating (roof)	•
Front/roof protective grating	•
Hinged front windshield	•
LEXAN front window glass	•
High strength glass, front and top	•
Cab elevation system	•
Air conditioning	•
Steering column, height and tilt adjustable	•
Multi-function color display	•
Fire extinguisher, dry powder	•
Radio / CD player	•
Rotating beacon	•
Sliding window in cab door	•
Safety glass	•
Seat heating with integrated A/C function	•
Windscreen washer system	•
Dust protection system	•
Pressurized cabin system	•

EQUIPMENT

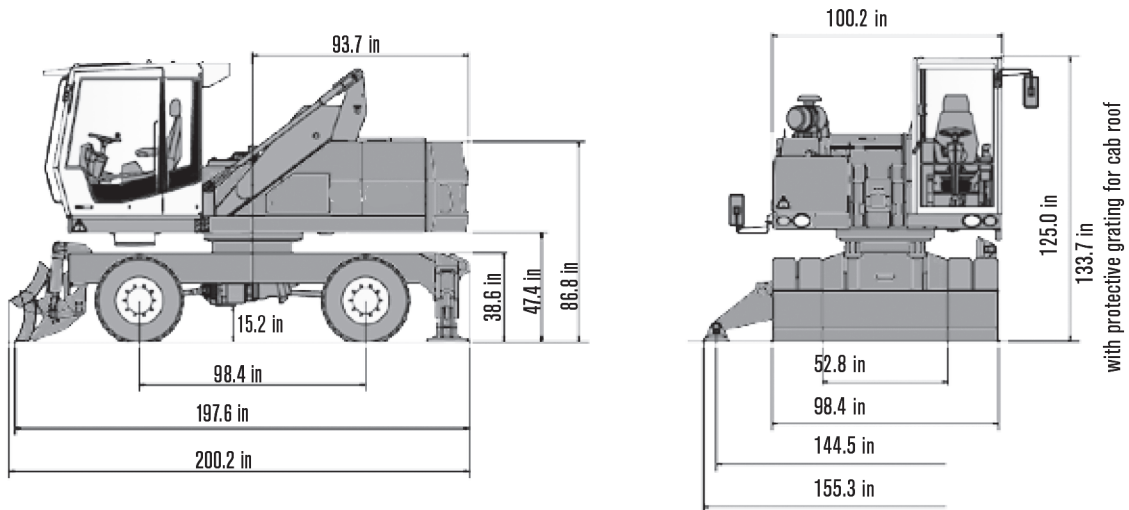
SERIES OPTION

Floodlight attached to cab floor	•
Floodlight, mounted to upper carriage	•
Floodlight, stick mounted, left	•
Close proximity range limiter for stick	•
Coolant and hydraulic oil level monitoring system	•
Hose rupture protection for lift cylinder	•
Hose rupture protection for stick cylinder	•
Stick shock protection	•
Lubrication of the grab suspension by central lubrication system	•
Overload warning / shutdown	•
XENON floodlight on stick	•
XENON floodlight on superstructure	•
XENON floodlight on cab roof	•
Ball-valve coupling	•
Filter system for attachments	•

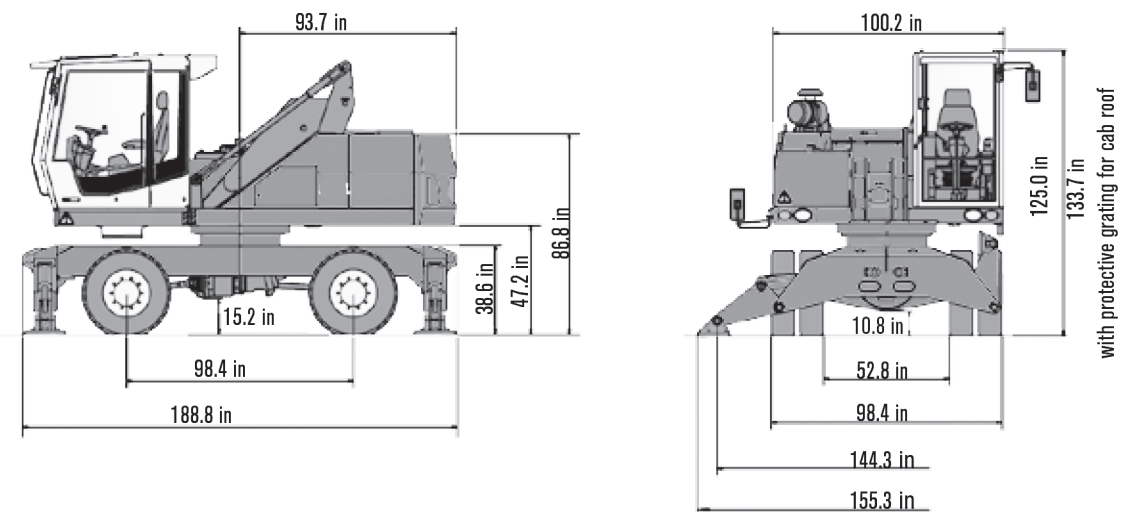
WORKS FOR YOU.™

GENERAL DIMENSIONS

2-POINT STABILIZERS WITH SUPPORT BLADE



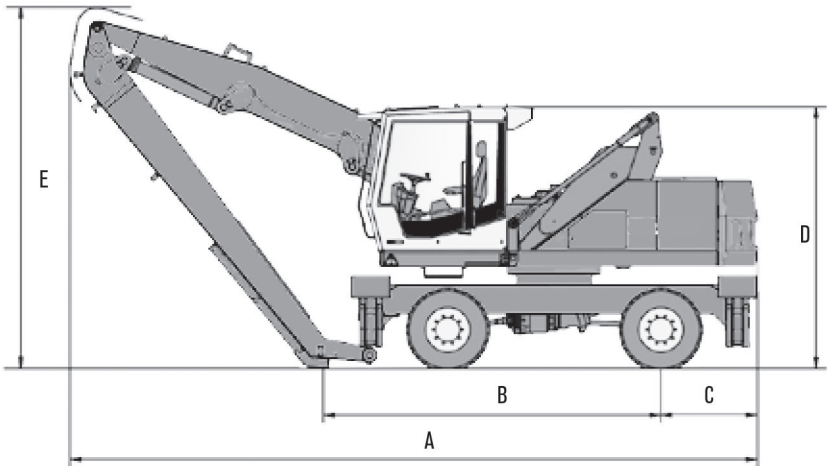
4-POINT STABILIZERS



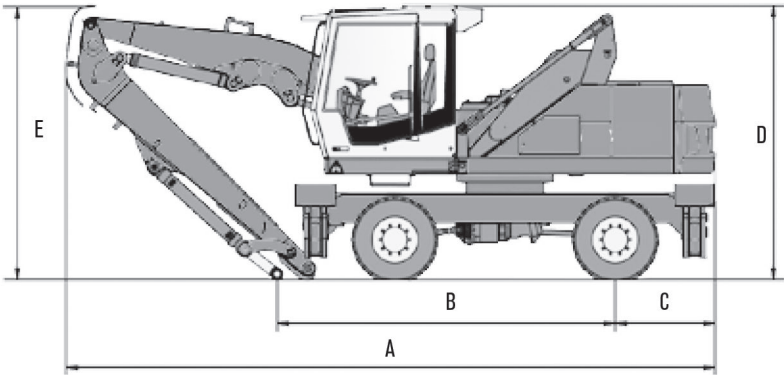
TRANSPORT DIMENSIONS

DIMENSIONS WITH STICK

TMH320 D



DIMENSIONS WITH MULTI-PURPOSE STICK

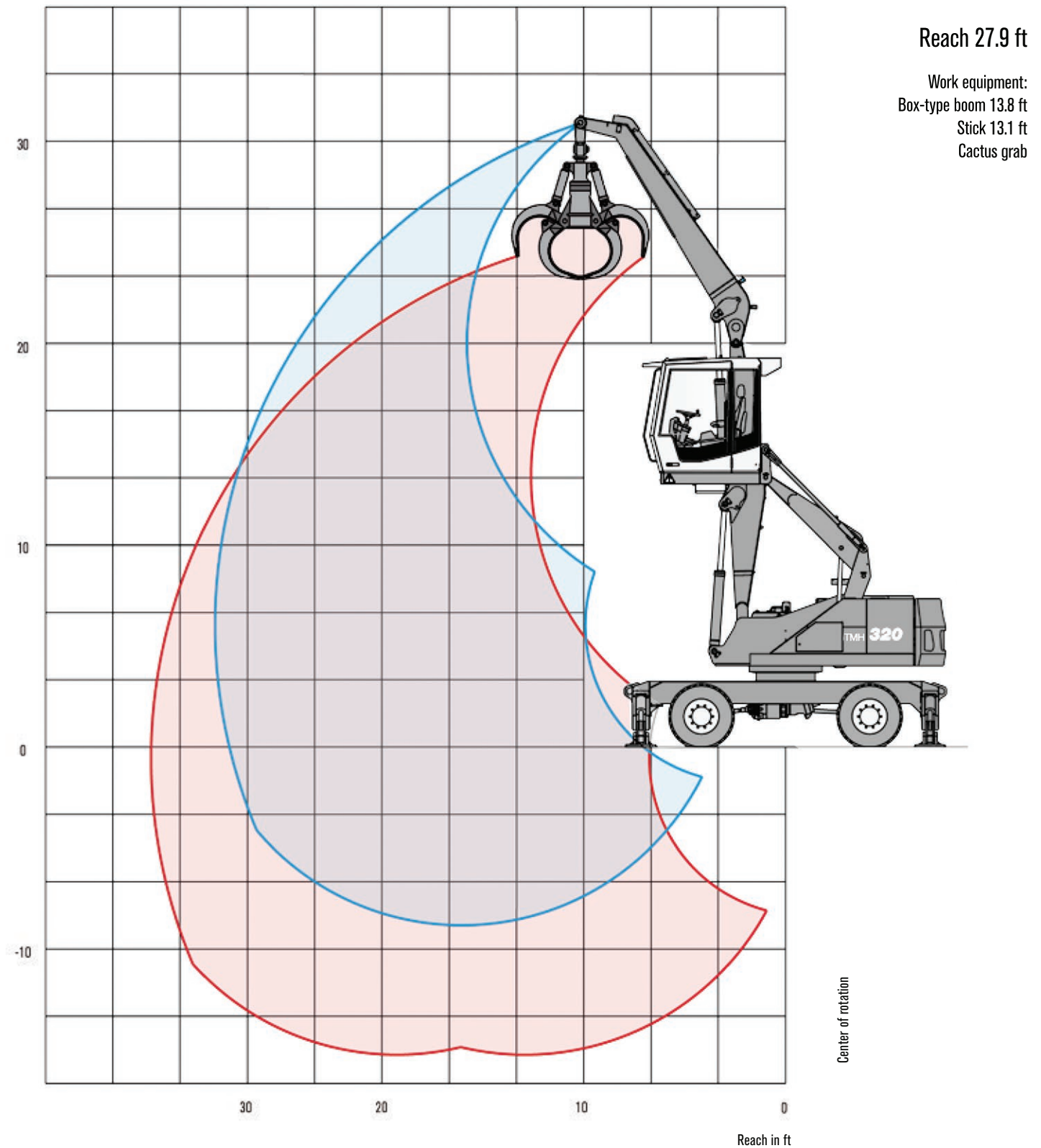


	Reach 27.9 ft	Reach 31.2 ft	Reach 34.1 ft	Reach 26.9 ft (Multi-purpose stick)	Reach 30.2 ft (Multi-purpose stick)
A	283.5 in	328.7 in	317.3 in	289.8 in	331.1 in
B	143.7 in	184.3 in	155.9 in	151.0 in	171.8 in
C	44.7 in	44.7 in	44.7 in	44.7 in	44.7 in
D	125.0 in / *133.7 in	125.0 in / *133.7 in	125.0 in / *133.7 in	125.0 in / *133.7 in	125.0 in / *133.7 in
E	149.6 in	127.6 in	166.9 in	121.9 in	105.3 in

* with protective grating for cab roof

WORKS FOR YOU.™

WORKING RANGES



TEREX®

LIFTING CAPACITIES

TMH320 D

HEIGHT ft	UNDERCARRIAGE STABILIZERS	REACH ft			
		10	15	20	25
25	non supported		(13,600*)	(8,900)	
	4-pt. supported		13,600* (13,600*)	9,800* (9,800*)	
	2-pt. supported with blade		13,600* (13,600*)	9,800* (9,800*)	
20	non supported			(8,900)	
	4-pt. supported			11,800* (11,800*)	
	2-pt. supported with blade			11,800* (11,800*)	
15	non supported		(13,600*)	(8,900)	(6,300)
	4-pt. supported		13,600* (13,600*)	12,000* (12,000*)	10,500 (10,500*)
	2-pt. supported with blade		13,600* (13,600*)	11,800 (12,000*)	8,100 (10,500*)
10	non supported		(13,600)	(8,700)	(6,300)
	4-pt. supported		15,800* (15,800*)	12,700* (12,700*)	9,900 (10,500*)
	2-pt. supported with blade		15,800* (15,800*)	11,400 (12,700*)	8,100 (10,500*)
5	non supported	(24,200)	(12,900)	(8,500)	(6,100)
	4-pt. supported	29,700* (29,700*)	18,400* (18,400*)	13,600* (13,600*)	9,900 (10,300*)
	2-pt. supported with blade	29,700* (29,700*)	17,100 (18,400*)	10,900 (13,600*)	7,900 (10,300*)
0	non supported	(10,900)	(12,200)	(8,300)	(6,100)
	4-pt. supported	18,600* (18,600*)	19,100* (19,100*)	13,400* (13,400*)	9,600* (9,600*)
	2-pt. supported with blade	18,600* (18,600*)	16,400 (19,100*)	10,700 (13,400*)	7,900 (9,600*)
-10	non supported	(17,500*)	(12,000)	(8,100)	(6,100)
	4-pt. supported	17,500* (17,500*)	16,700* (16,700*)	11,400* (11,400*)	7,000* (7,000*)
	2-pt. supported with blade	17,500* (17,500*)	16,200 (16,700*)	10,700 (11,400*)	7,000* (7,000*)

RECOMMENDED ATTACHMENTS*

Lift Hook	22046 lbs
Terex® Cactus Grab 0.52 yd³	Open or half-closed tines
Terex® Cactus Grab 0.78 yd³	Open or half-closed tines
Magnet System	Terex® magnetic plate

*May vary depending on material being handled and operating conditions.

Capacity values are stated in lbs. The pump pressure is 5221 psi. The values, in accordance with ISO 10567, amount to 75% of the static tipping load or 87% of the hydraulic lifting force (marked*). They apply to slewing operations through 360° on a firm and level surface.

Values in parentheses apply to the longitudinal direction of the undercarriage. "Nonsupported" values only apply when the load is hoisted above the front or rear axle.

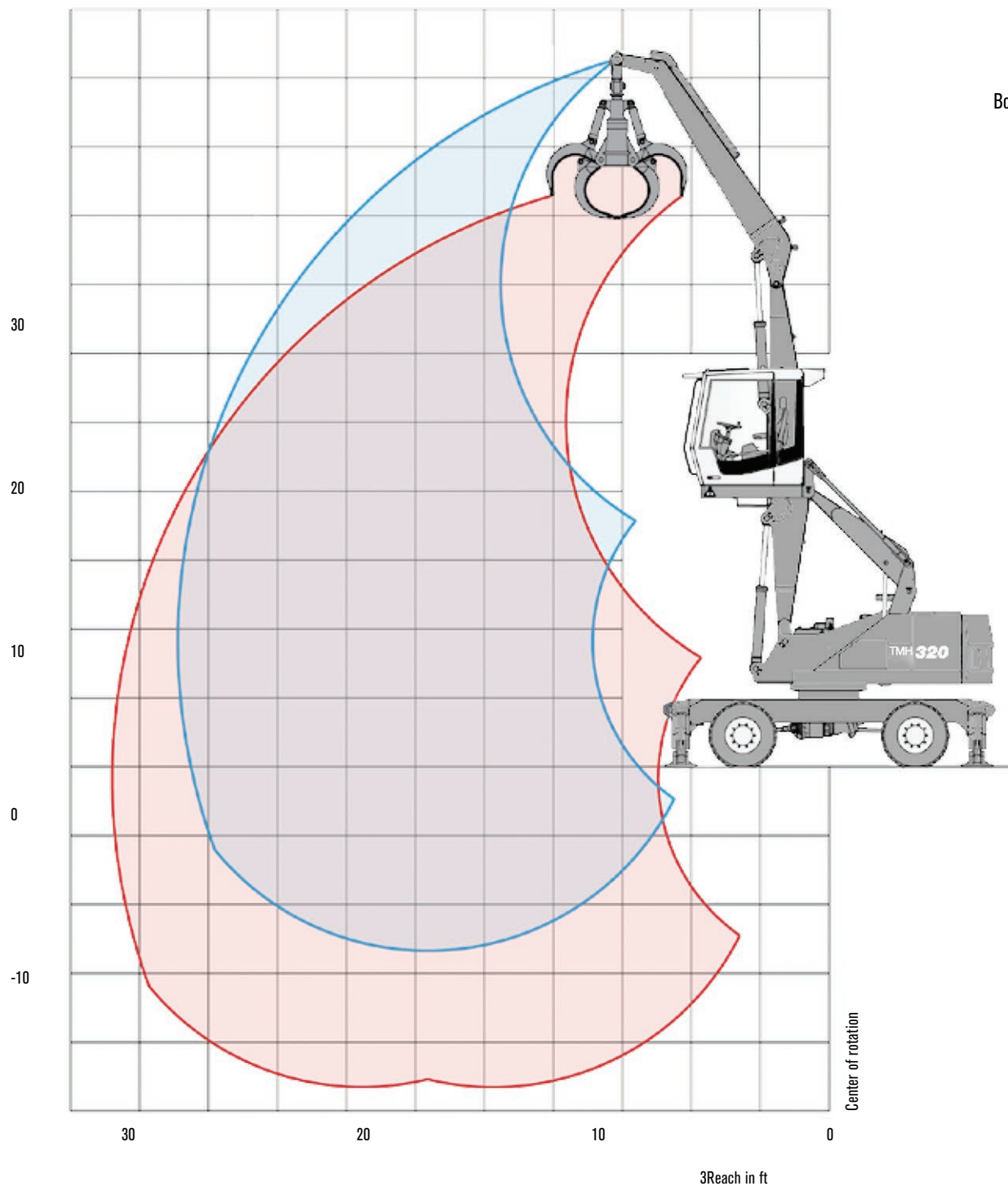
The weight of the attached hoisting equipment (grab, magnet, coupler, lift hook, etc.) must be deducted from the capacity values. In accordance with CE guidelines, hose-rupture protection valves on the lift cylinders and an overload warning device are required for crane operations.

WORKS FOR YOU.™

WORKING RANGES

Reach 31.2 ft

Work equipment:
Box-type boom 17.0 ft
Stick 13.1 ft
Cactus grab



LIFTING CAPACITIES

TMH320 D

HEIGHT ft	UNDERCARRIAGE STABILIZERS	REACH ft			
		15	20	25	30
30	non supported	(14,000*)			
	4-pt. supported	14,000* (14,000*)			
	2-pt. supported with blade	14,000* (14,000*)			
25	non supported		(9,200)		
	4-pt. supported		11,200* (11,200*)		
	2-pt. supported with blade		11,200* (11,200*)		
20	non supported		(8,900)	(6,500)	
	4-pt. supported		11,200* (11,200*)	9,800* (9,800*)	
	2-pt. supported with blade		11,200* (11,200*)	8,100 (9,800*)	
15	non supported	(13,800)	(8,700)	(6,300)	(4,800)
	4-pt. supported	14,700* (14,700*)	11,800* (11,800*)	9,800* (9,800*)	7,400 (8,100*)
	2-pt. supported with blade	14,700* (14,700*)	11,400 (11,800*)	8,100 (9,800*)	6,100 (8,100*)
10	non supported	(13,100)	(8,500)	(6,100)	(4,800)
	4-pt. supported	16,900* (16,900*)	12,700* (12,700*)	9,800 (10,000*)	7,400 (8,100*)
	2-pt. supported with blade	16,900* (16,900*)	10,900 (12,700*)	7,800 (10,000*)	6,100 (8,100*)
5	non supported	(12,200)	(8,100)	(5,900)	(4,500)
	4-pt. supported	18,600* (18,600*)	13,100* (13,100*)	9,600 (10,000*)	7,400 (7,600*)
	2-pt. supported with blade	16,200 (18,600*)	10,700 (13,100*)	7,600 (10,000*)	5,900 (7,600*)
0	non supported	(11,600)	(7,800)	(5,900)	(4,500)
	4-pt. supported	18,000* (18,000*)	12,700* (12,700*)	9,400* (9,400*)	6,700* (6,700*)
	2-pt. supported with blade	15,800 (18,000*)	10,000 (12,700*)	7,600 (9,400*)	5,900 (6,700*)
-5	non supported	(11,400)	(7,600)	(5,600)	
	4-pt. supported	15,100* (15,100*)	10,900* (10,900*)	7,800* (7,800*)	
	2-pt. supported with blade	15,100* (15,100*)	10,300 (10,900*)	7,400 (7,800*)	

RECOMMENDED ATTACHMENTS*

Lift hook	22046 lbs
Terex® Cactus Grab 0.52 yd³	Open or half-closed tines
Grab For Lightweight Materials 0.78 yd³	Open or half-closed tines
Magnet System	Terex® magnetic plate

*May vary depending on material being handled and operating conditions.

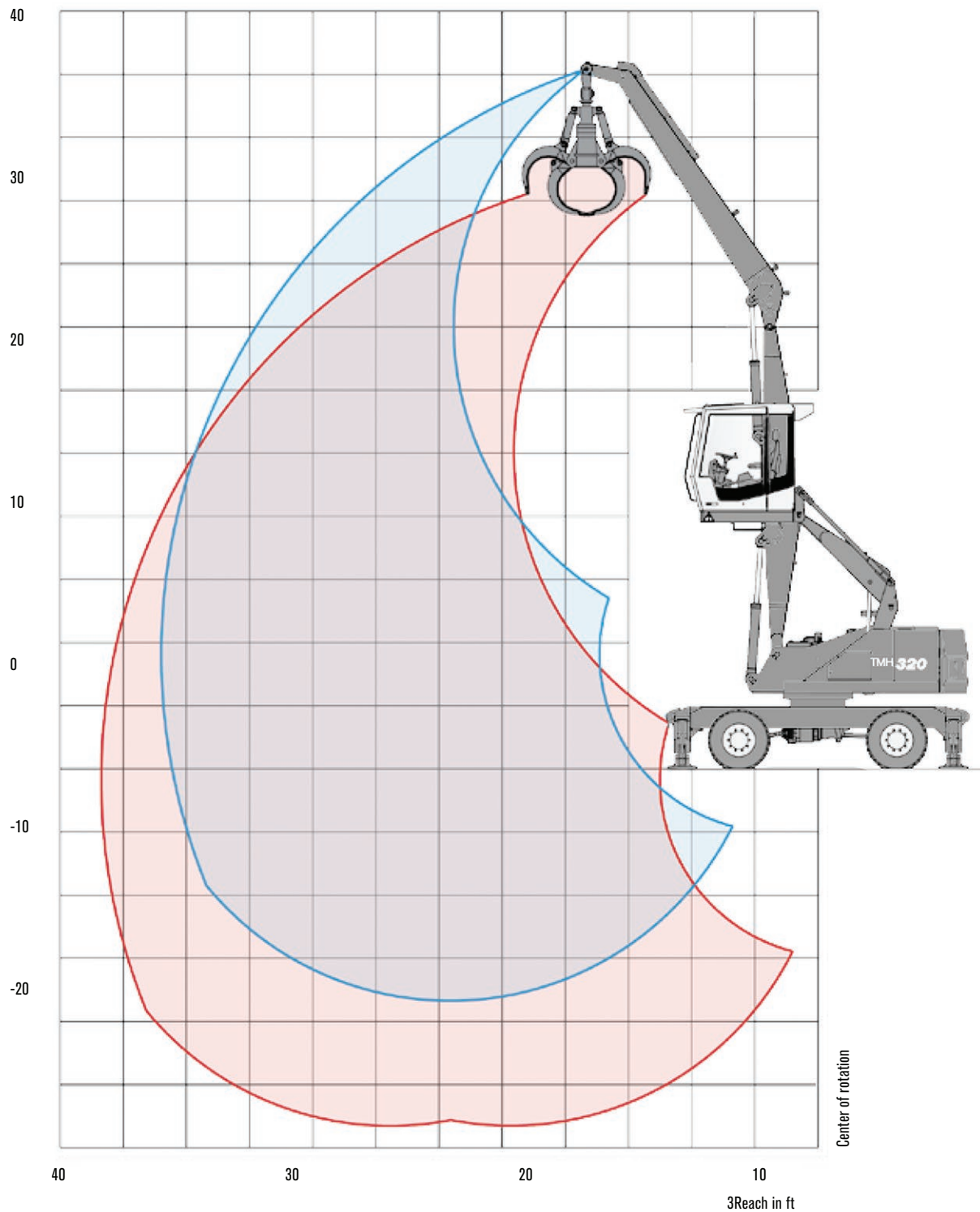
Capacity values are stated in lbs. The pump pressure is 5,221 psi. The values, in accordance with ISO 10567, amount to 75% of the static tipping load or 87% of the hydraulic lifting force (marked*). They apply to slewing operations through 360° on a firm and level surface.

Values in parentheses apply to the longitudinal direction of the undercarriage. "Nonsupported" values only apply when the load is hoisted above the front or rear axle.

The weight of the attached hoisting equipment (grab, magnet, coupler, lift hook, etc.) must be deducted from the capacity values. In accordance with CE guidelines, hose-rupture protection valves on the lift cylinders and an overload warning device are required for crane operations.

WORKS FOR YOU.™

WORKING RANGES



Reach 34.1 ft

Work equipment:
Box-type boom 17.0 ft
Stick 16.4 ft
Cactus grab

LIFTING CAPACITIES

TMH320 D

HEIGHT ft	UNDERCARRIAGE STABILIZERS	REACH ft			
		15	20	25	30
30	non supported		(9,000)		
	4-pt. supported		10,400* (10,400*)		
	2-pt. supported with blade		10,400* (10,400*)		
25	non supported		(9,100)	(6,300)	
	4-pt. supported		9,800* (9,800*)	9,000* (9,000*)	
	2-pt. supported with blade		9,800* (9,800*)	8,100* (9,000*)	
20	non supported		(9,100)	(6,300)	(4,600)
	4-pt. supported		9,900* (9,900*)	8,900* (8,900*)	7,400* (7,900*)
	2-pt. supported with blade		9,900* (9,900*)	8,100 (8,900*)	6,000 (7,900*)
15	non supported		(8,800)	(6,100)	(4,500)
	4-pt. supported		10,600* (10,600*)	9,200* (9,200*)	7,400 (8,000*)
	2-pt. supported with blade		10,600* (10,600*)	8,000 (9,200*)	5,900 (8,000*)
10	non supported	(13,300)	(8,400)	(5,900)	(4,400)
	4-pt. supported	14,700* (14,700*)	11,700* (11,700*)	9,600* (9,600*)	7,200 (8,100*)
	2-pt. supported with blade	14,700* (14,700*)	11,000 (11,700*)	7,700 (9,600*)	5,800 (8,100*)
5	non supported	(12,200)	(7,900)	(5,700)	(4,300)
	4-pt. supported	17,400* (17,400*)	12,700* (12,700*)	9,400 (10,000*)	7,100 (8,000*)
	2-pt. supported with blade	16,500 (17,400*)	10,500* (12,700*)	7,500 (10,000*)	5,700 (8,000*)
0	non supported	(11,300)	(7,500)	(5,400)	(4,100)
	4-pt. supported	18,400* (18,400*)	12,700 (13,000*)	9,100 (9,800*)	6,900 (7,500*)
	2-pt. supported with blade	15,500 (18,400*)	10,000 (13,000*)	7,200 (9,800*)	5,500 (7,500*)
-5	non supported	(10,800)	(7,200)	(5,300)	(4,100)
	4-pt. supported	17,000* (17,000*)	12,100* (12,100*)	8,900* (9,000*)	6,400* (6,400*)
	2-pt. supported with blade	15,000 (17,000*)	9,700 (12,100*)	7,100 (9,000*)	5,500 (6,400*)
-10	non supported	(10,700)	(7,100)	(5,200)	
	4-pt. supported	13,300* (13,300*)	9,700* (9,700*)	6,900* (6,900*)	
	2-pt. supported with blade	13,300* (13,300*)	9,600 (9,700*)	6,900* (6,900*)	

RECOMMENDED ATTACHMENTS*

Lift hook	22046 lbs
Terex® Cactus Grab 0.52 yd³	Open or half-closed tines
Grab for lightweight materials 0.65 yd³	Depending on density of goods
Magnet System	Terex® magnetic plate

*May vary depending on material being handled and operating conditions.

Capacity values are stated in lbs. The pump pressure is 5,221 psi. The values, in accordance with ISO 10567, amount to 75% of the static tipping load or 87% of the hydraulic lifting force (marked *). They apply to slewing operations through 360° on a firm and level surface.

Values in parentheses apply to the longitudinal direction of the undercarriage. "Nonsupported" values only apply when the load is hoisted above the front or rear axle.

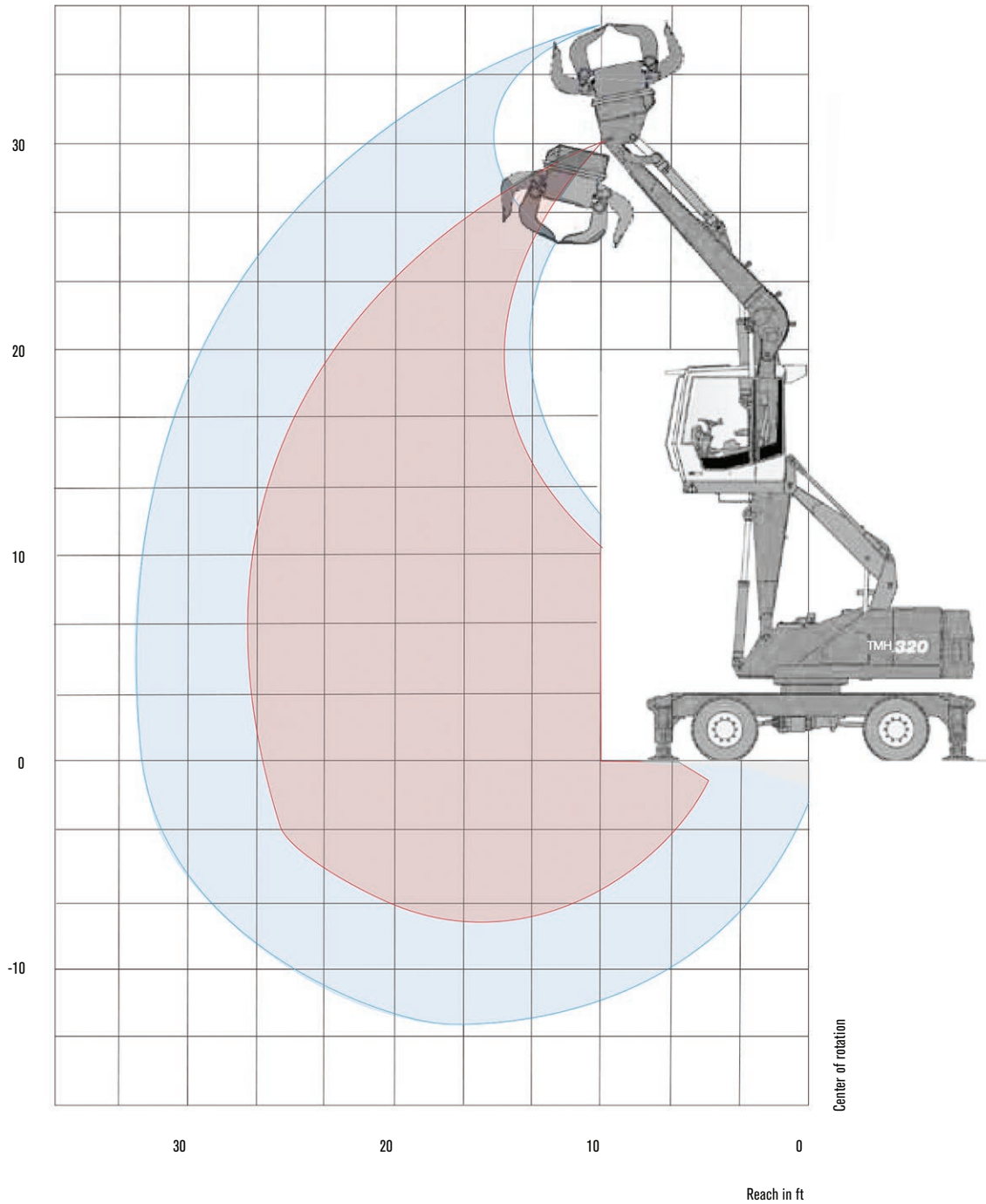
The weight of the attached hoisting equipment (grab, magnet, coupler, lift hook, etc.) must be deducted from the capacity values. In accordance with CE guidelines, hose-rupture protection valves on the lift cylinders and an overload warning device are required for crane operations.

WORKS FOR YOU.™

WORKING RANGES

Reach 26.9 ft

Work equipment:
Box-type boom 13.8 ft
Multi-purpose stick 12.1 ft
Sorting grab



LIFTING CAPACITIES

TMH320 D

HEIGHT ft	UNDERCARRIAGE STABILIZERS	REACH ft			
		10	15	20	25
30	non supported	(13,000*)			
	4-pt. supported	13,000* (13,000*)			
	2-pt. supported with blade	13,000* (13,000*)			
25	non supported		(13,000*)	(8,400)	
	4-pt. supported		13,000* (13,000*)	9,200* (9,200*)	
	2-pt. supported with blade		13,000* (13,000*)	9,200* (9,200*)	
20	non supported		(13,000*)	(8,400*)	
	4-pt. supported		13,000* (13,000*)	11,200* (11,200*)	
	2-pt. supported with blade		13,000* (13,000*)	11,200 (11,200*)	
15	non supported		(13,000*)	(8,400)	(5,700)
	4-pt. supported		13,000* (13,000*)	11,400* (11,400*)	9,900 (9,900*)
	2-pt. supported with blade		13,000* (13,000*)	11,200 (11,400*)	7,500 (9,900*)
10	non supported	(19,600*)	(13,000)	(8,100)	(5,700)
	4-pt. supported	19,600* (19,600*)	15,200* (15,200*)	11,400* (11,400*)	9,200 (9,900*)
	2-pt. supported with blade	19,600* (19,600*)	15,200* (15,200*)	10,800 (12,100*)	7,500 (9,900*)
5	non supported	(23,000)	(12,300)	(7,900)	(5,500)
	4-pt. supported	28,500* (28,500*)	17,800* (17,800*)	13,000* (13,000*)	9,200 (9,700*)
	2-pt. supported with blade	28,500* (28,500*)	16,500 (17,800*)	10,300 (13,000*)	7,200 (9,700*)
0	non supported	(10,300)	(11,600)	(77,00)	(5,500)
	4-pt. supported	18,300* (18,300*)	18,500* (18,500*)	12,800* (12,800*)	9,000* (9,000*)
	2-pt. supported with blade	18,300* (18,300*)	15,800 (18,500*)	10,100 (12,800*)	7,700 (9,900*)
-5	non supported	(16,900*)	(11,400)	(7,500)	
	4-pt. supported	16,900* (16,900*)	16,100* (16,100*)	10,800* (10,800*)	
	2-pt. supported with blade	16,900* (16,900*)	15,900* (16,100*)	10,100* (10,800*)	

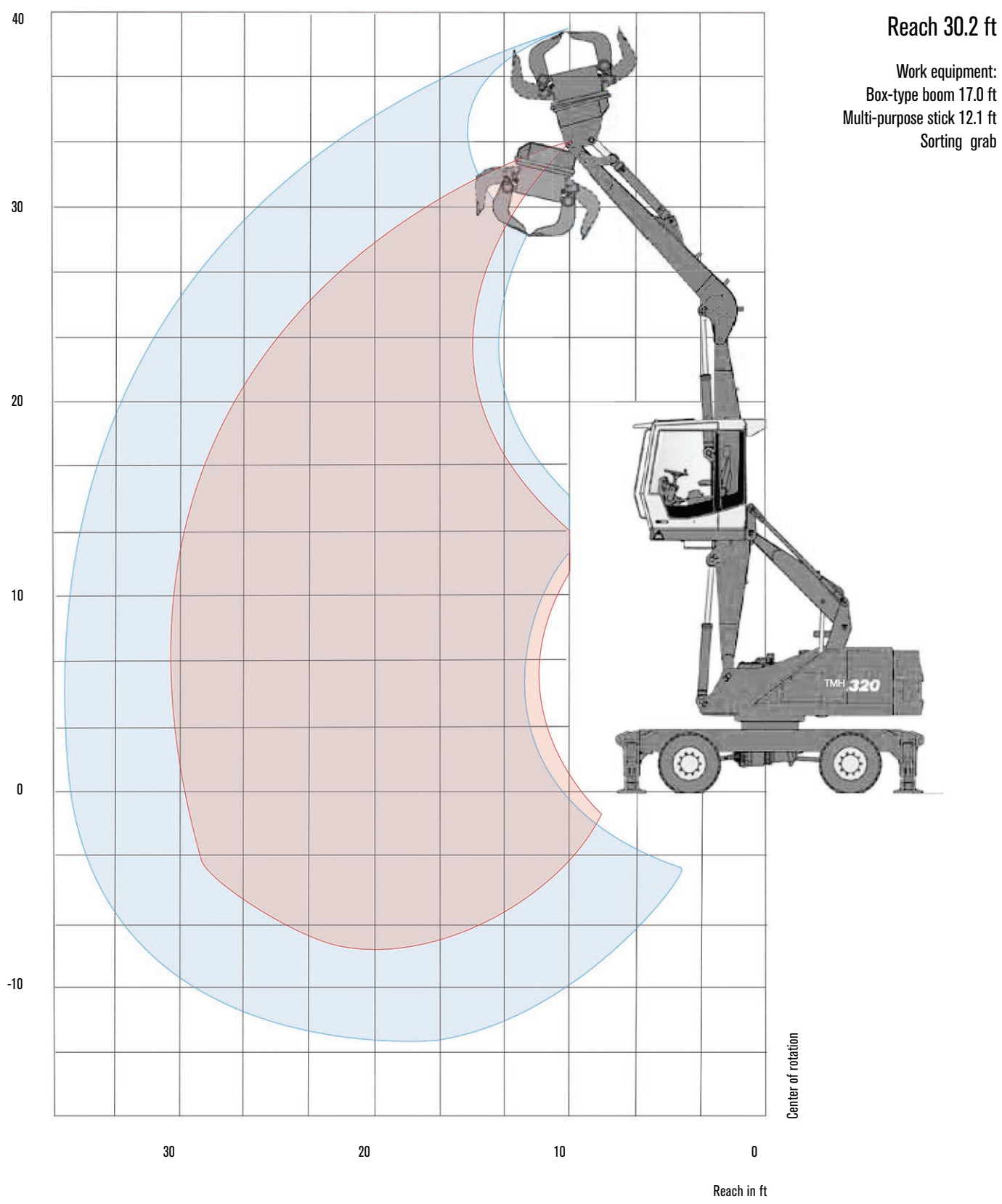
Capacity values are stated in lbs. The pump pressure is 5,221 psi. The values, in accordance with ISO 10567, amount to 75% of the static tipping load or 87% of the hydraulic lifting force (marked *). They apply to slewing operations through 360° on a firm and level surface.

Values in parentheses apply to the longitudinal direction of the undercarriage. “Nonsupported” values only apply when the load is hoisted above the front or rear axle.

The weight of the attached hoisting equipment (grab, magnet, coupler, lift hook, etc.) must be deducted from the capacity values. In accordance with CE guidelines, hose-rupture protection valves on the lift cylinders and an overload warning device are required for crane operations.

WORKS FOR YOU.™

WORKING RANGES



LIFTING CAPACITIES

TMH320 D

HEIGHT ft	UNDERCARRIAGE STABILIZERS	REACH ft			
		15	20	25	30
30	non supported	(13,400)			
	4-pt. supported	13,400* (13,400*)			
	2-pt. supported with blade	13,400* (13,400*)			
25	non supported	(13,200*)	(8,600)		
	4-pt. supported	13,200* (13,200*)	10,600* (10,600*)		
	2-pt. supported with blade	13,200* (13,200*)	10,600* (10,600*)		
20	non supported	(13,200*)	(8,300)	(5,900)	
	4-pt. supported	13,200* (13,200*)	10,600* (10,600*)	9,200* (9,200*)	
	2-pt. supported with blade	13,200* (13,200*)	10,600* (10,600*)	7,500 (9,200*)	
15	non supported	(13,200)	(8,100)	(5,700)	
	4-pt. supported	14,100* (14,100*)	11,200* (11,200*)	9,200* (9,200*)	
	2-pt. supported with blade	14,100* (14,100*)	10,800 (11,200*)	7,500 (9,200*)	
10	non supported	(12,500)	(7,900)	(5,500)	(4,200)
	4-pt. supported	16,300* (16,300*)	12,100* (12,100*)	9,200 (9,400*)	6,800 (7,500*)
	2-pt. supported with blade	16,300* (16,300)	10,300 (12,100*)	7,200 (9,400*)	5,500 (7,500*)
5	non supported	(11,600)	(7,500)	(5,300)	(3,900)
	4-pt. supported	18,000* (18,000*)	12,500* (12,500*)	9,000 (9,400*)	6,800 (7,000*)
	2-pt. supported with blade	15,600 (18,000*)	10,100 (12,500*)	7,000 (9,400*)	5,300 (7,000*)
0	non supported	(11,000)	(7,200)	(5,300)	
	4-pt. supported	17,400* (17,400*)	12,100* (12,100*)	8,800* (8,800*)	
	2-pt. supported with blade	15,200 (17,400*)	9,400 (12,100*)	7,000 (8,800*)	
-5	non supported	(10,800)	(7,000)	(5,000)	
	4-pt. supported	14,500* (14,500*)	10,300* (10,300*)	7,200* (7,200*)	
	2-pt. supported with blade	14,500* (14,500*)	9,700 (10,300*)	6,800 (7,200*)	

Capacity values are stated in lbs. The pump pressure is 5,221 psi. The values, in accordance with ISO 10567, amount to 75% of the static tipping load or 87% of the hydraulic lifting force (marked *). They apply to slewing operations through 360° on a firm and level surface.

Values in parentheses apply to the longitudinal direction of the undercarriage. “Nonsupported” values only apply when the load is hoisted above the front or rear axle.

The weight of the attached hoisting equipment (grab, magnet, coupler, lift hook, etc.) must be deducted from the capacity values. In accordance with CE guidelines, hose-rupture protection valves on the lift cylinders and an overload warning device are required for crane operations.

WORKS FOR YOU.™



ENVIRONMENTAL EQUIPMENT

CONTACT DETAILS

Terex Environmental Equipment
1250 Commerce Drive
Farwell, Michigan 48622
USA

Toll Free: 1-800-953-5532
Phone: 1-989-588-4295
Fax: 1-989-588-4827
E Mail: salesenvironmental@terex.com
Website: www.terex.com/environmental-equipment

CUSTOMER SERVICE

Technical Helpdesk Support
Tom Feichtinger
Tel: 1 (989) 339 2060
E-mail: Thomas.feichtinger@terex.com

Customer Service Representative
Jeff Hohlbein
Tel: 1 (989) 339 2062
E-mail: jeff.hohlbein@terex.com



SOCIAL NETWORKING



Become a Terex fan on Facebook by visiting
www.facebook.com/terexcorporation



Check out Terex Videos on YouTube:
www.youtube.com/TerexEnviroEquip



WORKS FOR YOU.

The material in this document is for information only and is subject to change without notice.

Terex assumes no liability resulting from errors or omissions in this document, or from the use of the information contained herein. Due to continual product development we reserve the right to change specifications without notice. Product performance figures given in this brochure are for guidance purposes only, this information does not constitute an expressed or implied warranty or guarantee, but shows test examples. These results will vary depending on feed source and types of material being used.

Photographs are for illustrative purposes only, some or all of the machines in the illustrations may have been fitted with optional extras. Please check for details on optional extras.

Products and services listed may be trademarks, service marks or trade-names of Terex Corporation and/or its subsidiaries in the USA and other countries. All rights reserved. Terex is a registered trademark of Trade Corporation in the USA and many other countries. ©2013 Terex Corporation.

©2013 Terex Corporation