



873 Heavy Duty Screener Features & Benefits

873

 **TEREX** | FINLAY



COMPLETE CRUSHING, SCREENING & RECYCLING SOLUTIONS

8 Series Range of Machines

 **TEREX** | FINLAY



863



873



883+



893

COMPLETE CRUSHING, SCREENING & RECYCLING SOLUTIONS

Machine Layout



Screenbox:

- Top & bottom deck: 3.66m x 1.53 (12' 5")
- Tensioning top deck: side
- Tensioning bottom deck: end
- Drive: Hydraulic with heavy duty bearing
- Catwalks: Galvanised access catwalk on both side of screen
- Screen angle: 13° - 19°, hydraulic adjustable
- Screen speed: 1000 rpm
- Screen stroke: 8mm (0.4")
- Screen box discharge end raises hydraulically 500mm to facilitate mesh changing
- Total screening area: 10.95m² (120ft²)

Fines Conveyor:

- Belt width: 800mm (32")
- Belt spec: plain belt
- Working angle: 24° - 28°
- Rosta scraper on head drum
- Speed: variable speed, 120 m/min (394 ft/min) max belt speed
- Standard discharge height: 4m (13' 1") max
- Stockpile capacity: 95m³ (124yd³) max
- Optional telescopic section
- Extended discharge height: 5.1m (16' 9") max

Hopper/Feeder:

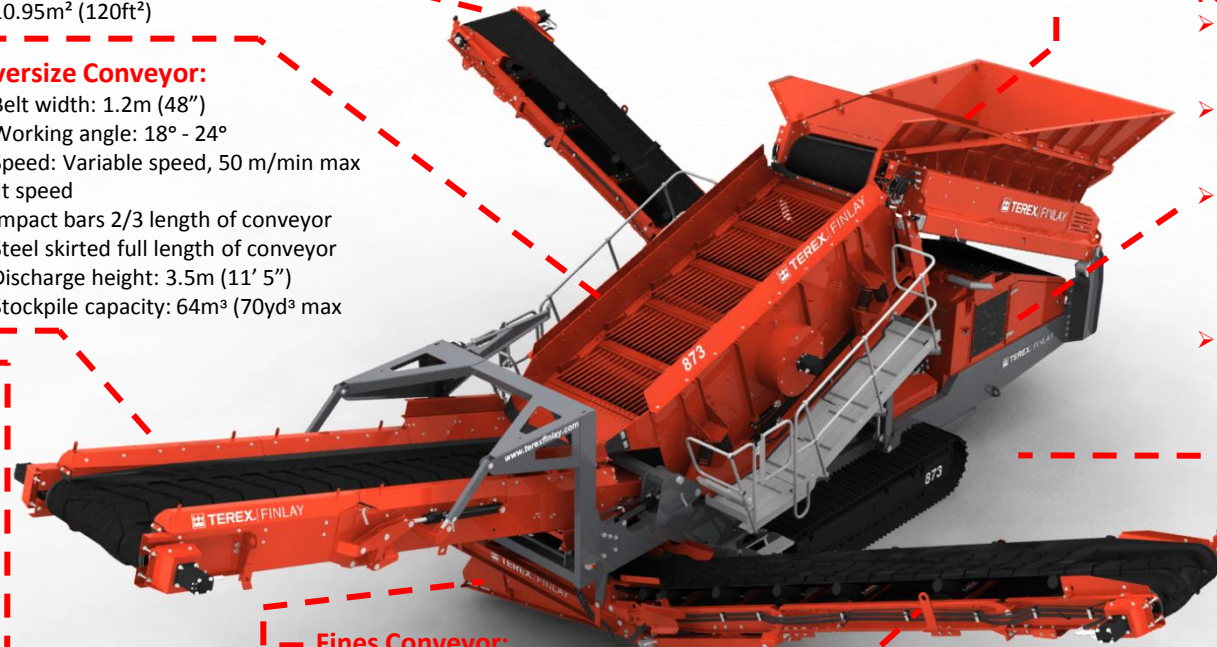
- Hopper capacity: 7m³ (9.16yd³)
- Feed height: 3.56m (11' 8")
- Feed in width: 2.6m (8' 6")
- Drive: twin drive motor gearbox arrangement
- Belt width: 1.2m (40")

Override Conveyor:

- Belt width: 1.2m (48")
- Working angle: 18° - 24°
- Speed: Variable speed, 50 m/min max belt speed
- Impact bars 2/3 length of conveyor
- Steel skirted full length of conveyor
- Discharge height: 3.5m (11' 5")
- Stockpile capacity: 64m³ (70yd³) max

Powerunit:

- Tier 3 / Stage IIIA: Caterpillar C4.4
Engine power: 83kW (111.3hp)
Engine speed: 2200 rpm
- Tier 3 / Stage IIIA: Caterpillar C4.4
Engine power: 97kW (130hp)
Engine speed: 2200 rpm
- Stage IIIA Constant Speed: Perkins 1104
Engine power: 97kW (130hp)
Engine speed: 1800 rpm
- Tier 4F / Stage IV: Caterpillar C4.4
Engine power: 82kW (110hp)
Engine speed: 2200 rpm



Midgrade Conveyor:

- Belt width: 800mm (32")
- Belt spec: chevron belt
- Working angle: 22° - 26°
- Speed: variable speed 120 m/min (394 ft/min) max belt speed
- Standard discharge height: 3.4m (11' 2")
- Stockpile capacity: 58m³ (76yd³) max
- Optional telescopic section
- Extended discharge height: 4.4m (14' 5") max
- Stockpile capacity: 126m³ (165yd³) max

Fines Conveyor:

- Belt width: 1.2m (48")
- Belt spec: 3 ply belt, EP 400
- Belt speed: 83m/min (272 ft/min)
- Conveyor fully skirted

Undercarriage:

- Shoe width: 400mm (16")
- Sprocket centres: 2.92m (9' 5")
- Speed: 0.9kph
- Gradeability: 27°

COMPLETE CRUSHING, SCREENING & RECYCLING SOLUTIONS

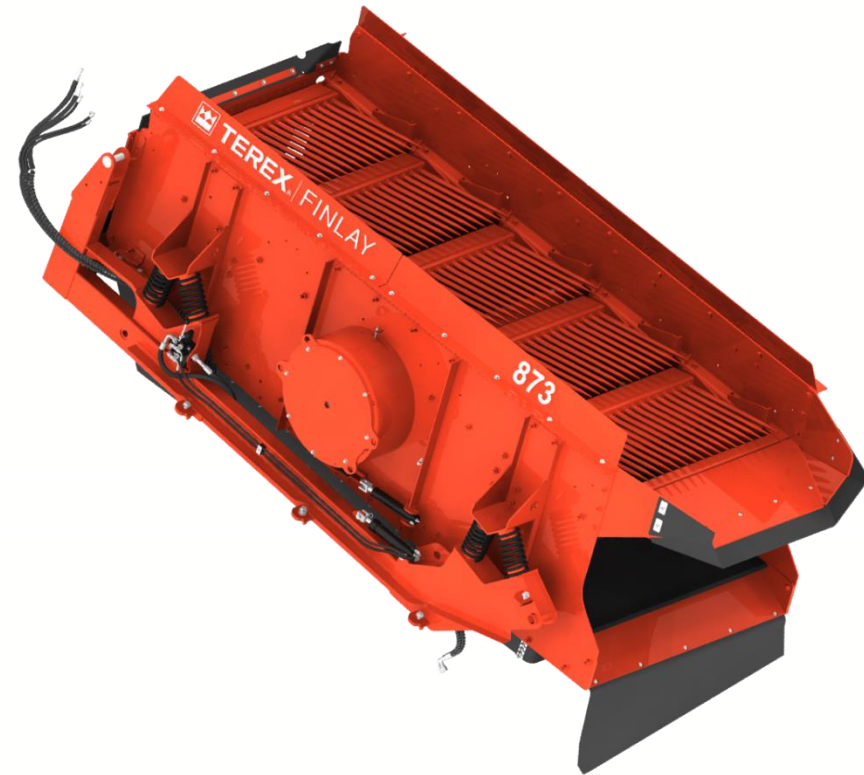
Screenbox



- Screening media options are compatible and interchangeable with the existing 883 and 883+
- Total screening area: 10.95m² (120ft²)
- Screen speed: 1000rpm
- Screen angle: 13° – 19°, hydraulic adjust
- Screen stroke standard: 8mm (0.4")
- Hydraulic drive with heavy duty bearing
- Discharge end raises hydraulically 500mm to facilitate media change
- Media options: mesh, punch plate, tines, bofor bars, cascade fingers, speedharps



- Large overlap between feeder and the screen which eliminates any fines spillage.



- Top deck: 3.66m x 1.53m (12' x 5") – side tensioned
- Bottom deck: 3.66m x 1.53m (12' x 5") – end tensioned

COMPLETE CRUSHING, SCREENING & RECYCLING SOLUTIONS

Screenbox vs. Competitors

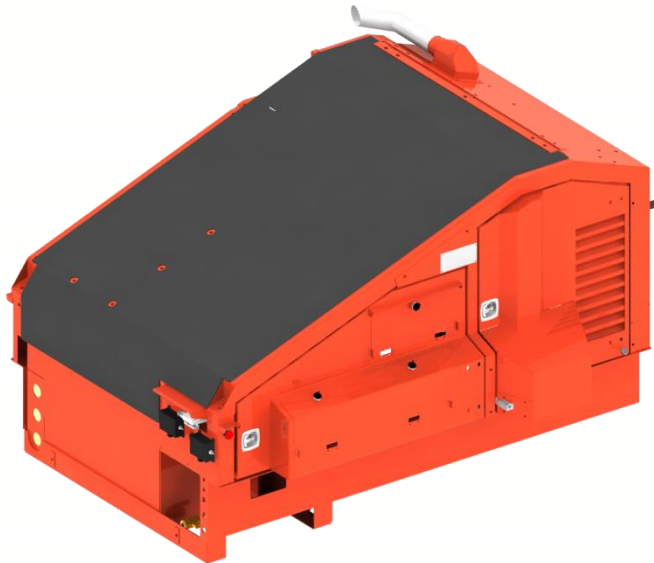


| Models | Top Deck Length | Bottom Deck Length | Deck Width | Bottom Deck Area |
|------------------|-----------------|--------------------|------------|--------------------|
| Finlay 873 | 12' | 12' | 5' | 60 ft ² |
| Sandvik QE330 | 12' | 11'10" | 4'9" | 52 ft ² |
| McCloskey R105 | 12' | 11'10" | 4'9" | 52 ft ² |
| Metso ST2.4 | 12' | 12' | 4'9" | 57 ft ² |
| PS Warrior 1400x | 12' | 12' | 4'9" | 57 ft ² |
| Keestrak Novum | 14' | 12" | 4'9" | 57 ft ² |

COMPLETE CRUSHING, SCREENING & RECYCLING SOLUTIONS

Powerunit Options

- Tier 3 / Stage IIIA: Caterpillar C4.4 – 83kW / 111.3hp 2200 rpm
- Tier 3 / Stage IIIA: Caterpillar C4.4 – 97kW / 130hp 2200 rpm
 - Higher rated engine for optional hydraulic configuration
- Stage IIIA Constant speed: Perkins 1104 – 97kW / 130hp 1800 rpm
 - Higher rated engine running at a lower rpm. Hydraulic system reconfigured to allow for lower engine rpm and lower fuel consumption.
 - This powerunit option is only available for sale in certain regions
- Tier 4F / Stage IV: Caterpillar C4.4 – 82kW / 110hp 2200 rpm



COMPLETE CRUSHING, SCREENING & RECYCLING SOLUTIONS

Hopper/Feeder



- Hopper capacity: 7m³ (9.16yd³)
- Feed height: 3.56m (11' 8")
- Feed in width: 2.6m (8' 6")
- Variable speed: 0 - 25 m/min
- Belt width: 1.2m (40")
- Twin drive motor gearbox arrangement

COMPLETE CRUSHING, SCREENING & RECYCLING SOLUTIONS

Hopper/Feeder



- Common 883/883+ hopper features
- Belt feeder with Rip Stop belt
- Impact bar feed area/impact roller discharge
- Twin gearbox drive



COMPLETE CRUSHING, SCREENING & RECYCLING SOLUTIONS

Side Conveyors



Fines Conveyor Feature

- 800mm (32") wide plain belt
- Working angle: 18° – 24°
- Rosta scraper on head drum
- Standard discharge height: 4.0m
- Stockpile capacity: 95m³ (124yd³) max
- Extended discharge height: 5.1m
- Extended stockpile capacity: 197m³

Midgrade Conveyor Feature

- 800mm (32") wide chevron belt
- Working angle: 22° – 26°
- Variable speed 120 m/min
- Standard discharge height: 3.4m
- Stockpile capacity: 58m³
- Extended discharge height: 4.4m
- Extended stockpile capacity: 126m³

Common Features

- Variable speed belt – max: 120m/min (394ft/min)
- All stockpile conveyors are hydraulically folded
- Optional telescopic section
 - Fines: 5.1m discharge height
 - Mids: 4.4m discharge height
 - Fines: 197m³ max stockpile
 - Mids: 126m³ max stockpile



COMPLETE CRUSHING, SCREENING & RECYCLING SOLUTIONS

Fines Conveyor



- 800mm (32") wide plain belt
- Working angle: 18° – 24°
- Rosta scraper on head drum
- Standard discharge height: 4.0m
- Stockpile capacity: 95m³ (124yd³) max
- Extended discharge height: 5.1m
- Extended stockpile capacity: 197m³

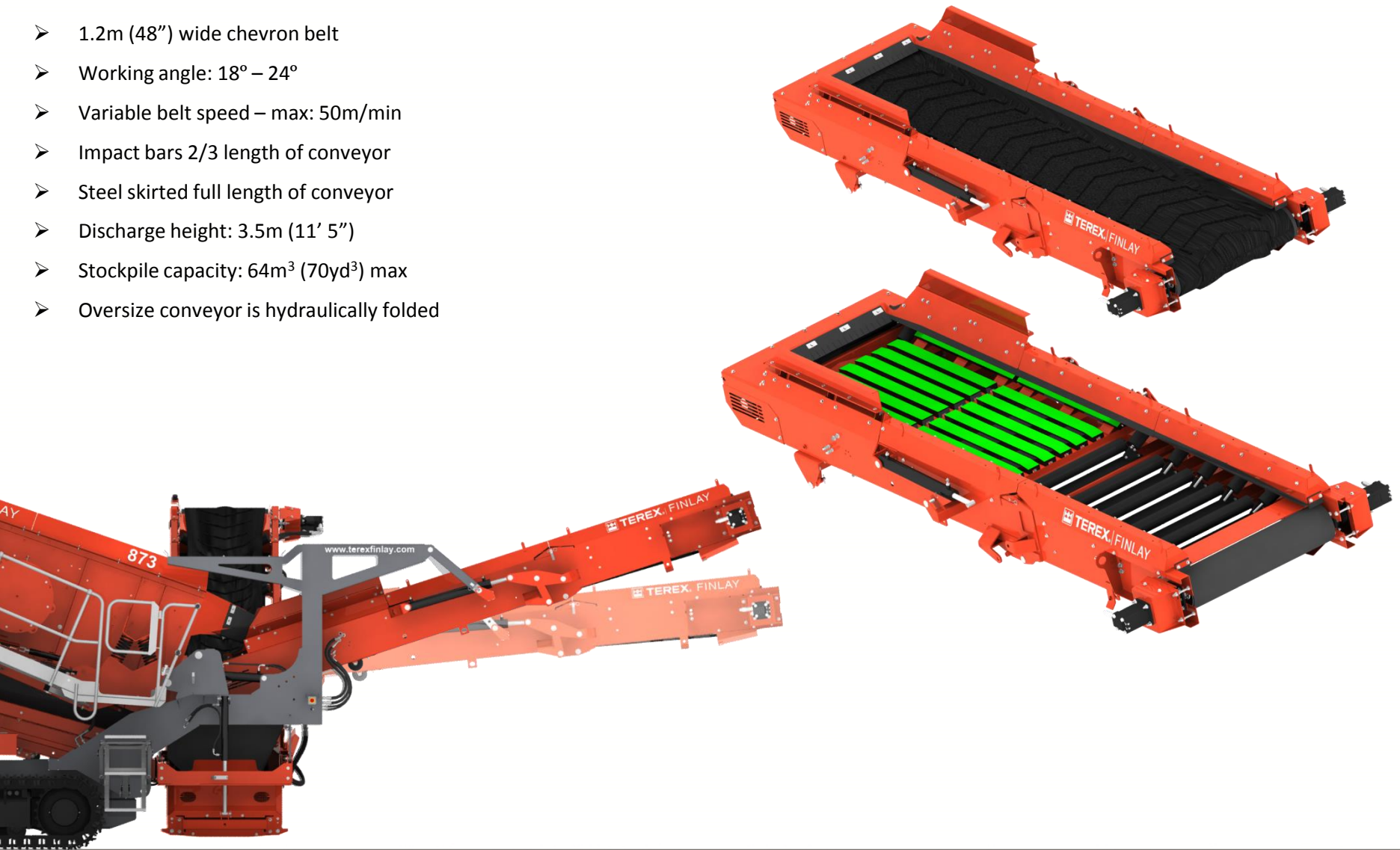


COMPLETE CRUSHING, SCREENING & RECYCLING SOLUTIONS

Oversize Conveyor



- 1.2m (48") wide chevron belt
- Working angle: 18° – 24°
- Variable belt speed – max: 50m/min
- Impact bars 2/3 length of conveyor
- Steel skirted full length of conveyor
- Discharge height: 3.5m (11' 5")
- Stockpile capacity: 64m³ (70yd³) max
- Oversize conveyor is hydraulically folded

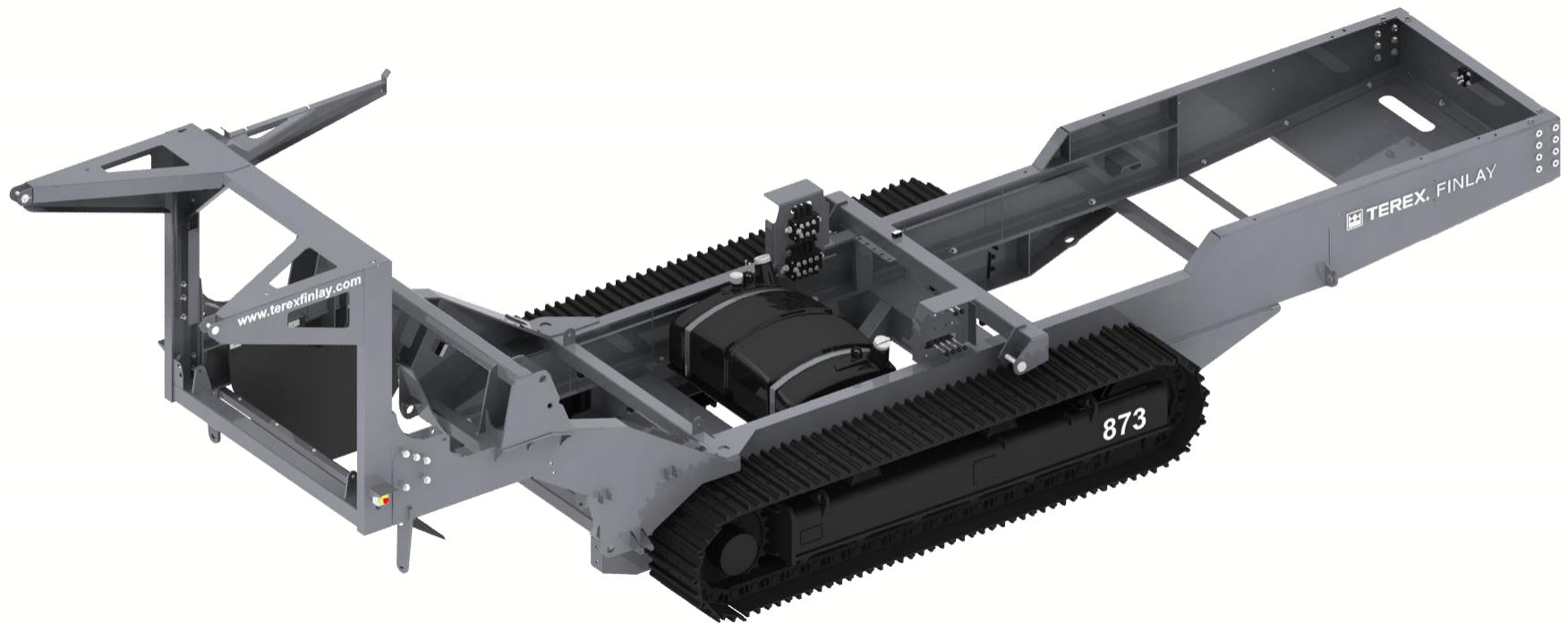


COMPLETE CRUSHING, SCREENING & RECYCLING SOLUTIONS

Chassis and Undercarriage Features



- Heavy duty undercarriage unit with 400mm wide pads (2.92m sprocket centres)
- Control operation of tracks via hand-held set with 5m connection lead
- Max speed: 0.9 kph
- Gradability: 27°



COMPLETE CRUSHING, SCREENING & RECYCLING SOLUTIONS

Walkways

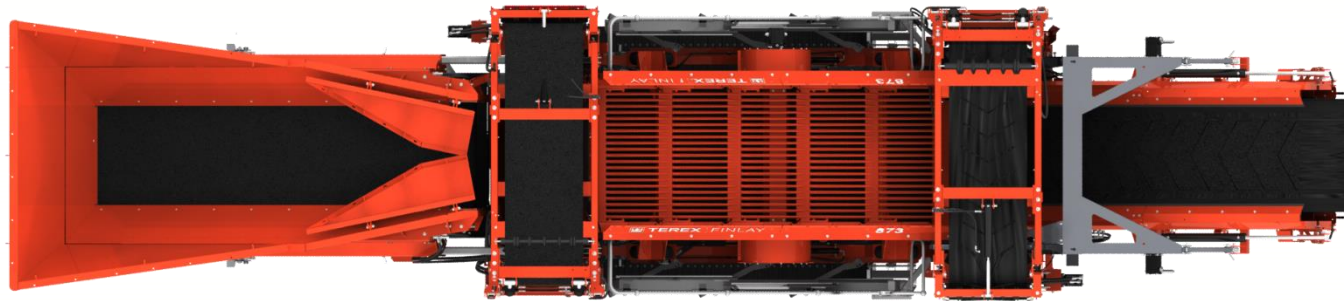


- Galvanised catwalk on both sides of screen box
- Includes handrails, kickboard and access ladders attached to chassis
- Catwalk provide more suitable footing when ascending to the screen and also has plant set-up time benefits
- Screen catwalk access ladders stow in place for transport



COMPLETE CRUSHING, SCREENING & RECYCLING SOLUTIONS

Transport Dimensions



Weight: 26,300kg (57,982lbs)
(Standard machine configuration)

COMPLETE CRUSHING, SCREENING & RECYCLING SOLUTIONS

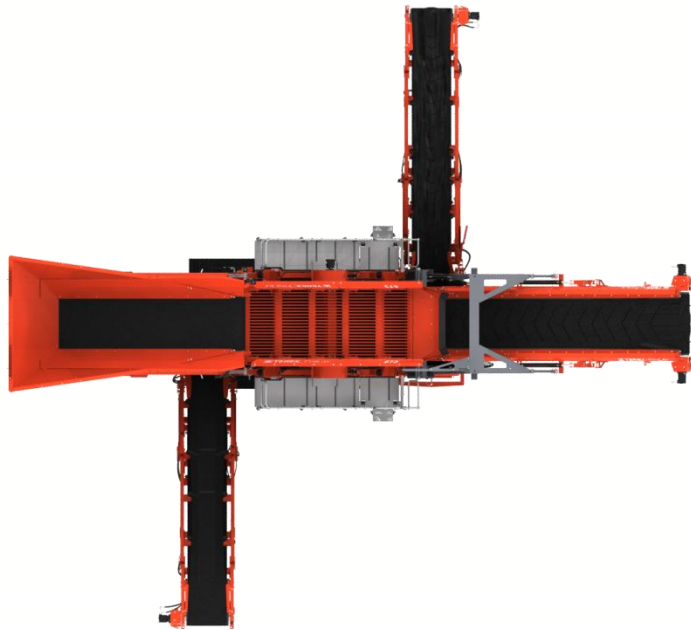
Working Dimensions



13.9m [45'-7"]

12.6m [41'-4"]

4.5m [14'-9"]



COMPLETE CRUSHING, SCREENING & RECYCLING SOLUTIONS

Direct Competitors

 **TEREX** | FINLAY



Sandvik QE330



McCloskey R105
Engine: CAT



Metso ST2.4
Engine: CAT



Powerscreen Warrior 1400x
Engine: CAT



Kee-track Novum

COMPLETE CRUSHING, SCREENING & RECYCLING SOLUTIONS