



Material Processing Range

#InTheMix

Irish Manufacturing Services Limited
34 Dunroe Road, Clogher, Co. Tyrone, N. Ireland
BT76 0DZ
Tel. +44 (0)28 8554 9656 E-mail info@ims-ltd.ie
website; www.ims-ltd.ie



IMS was formed in 2010 by a team of individuals with a wealth of experience in designing and manufacturing equipment for material processing industry.

The company is based in Northern Ireland, in a region renowned worldwide for its expertise in producing high quality, cost effective equipment for the world market.

IMS operate from a purpose build factory to ensure efficient and quality manufacturing processes and to provide a reliable service to their ever increasing customer base.

Contact Details

Irish Manufacturing Services Limited

34 Dunroe Road

Clogher

Co.Tyrone

N.Ireland

BT760DZ

Telephone No. +44 28 85549656

E-mail: info@ims-ltd.ie

Website: www.ims-ltd.ie

This brochure is available on the downloads section of our website



PM1050-16TB

Track Pugmill



 YouTube

SEARCH

IMS PUGMILL





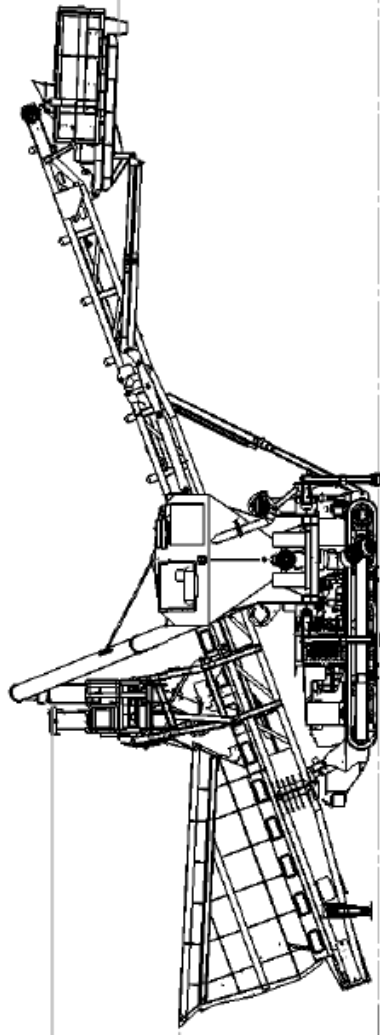
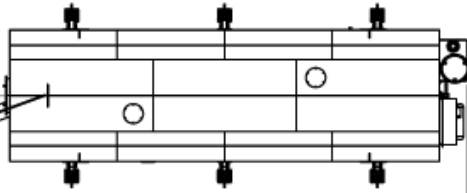
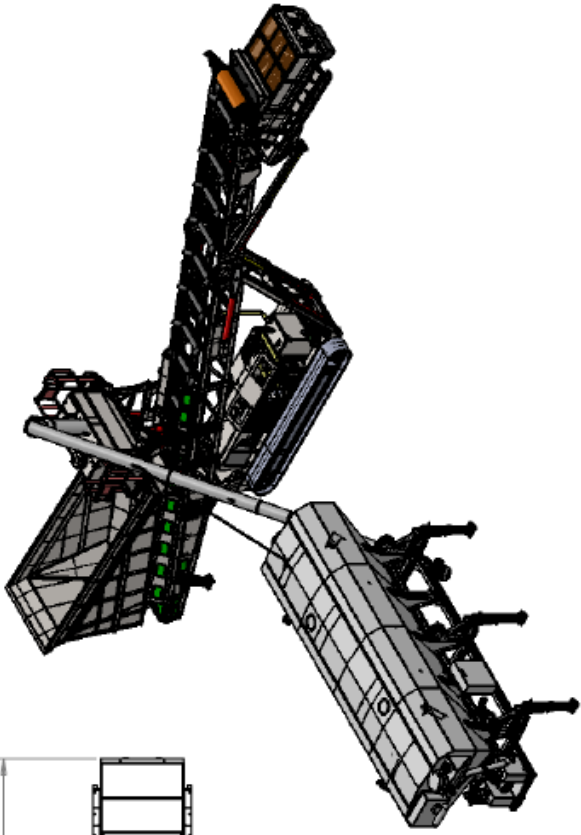
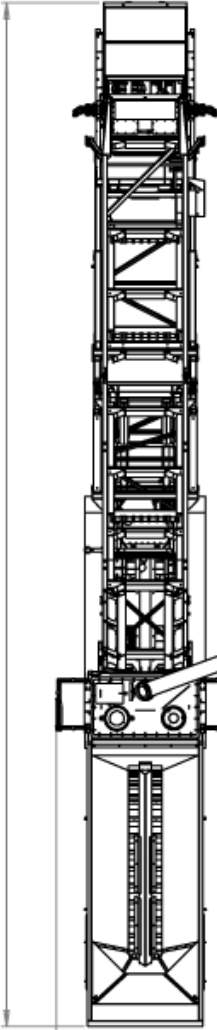
The PM1050-16TB, the ideal solution for jobs that require high production material blending and mixing with the added bonus of a stockpiling facility



18760

16041

20°



5986

3646

4764



VIEW A



GA

TITLE

DATE

SIGNATURE

NAME

DATE

SIGNATURE

NAME

DATE

SIGNATURE

NAME

DATE

SIGNATURE

NAME

DATE

SIGNATURE

NAME

DATE

SIGNATURE

NAME

DATE

SIGNATURE

NAME

DATE

SIGNATURE

NAME

DATE

SIGNATURE

NAME

DATE

SIGNATURE

NAME

DATE

SIGNATURE

DWG NO.

MATERIAL

WEIGHT

SCALE

SHEET

OF

TOTAL

SHEET

NO.

OF

TOTAL

SHEET

NO.

OF

TOTAL

SHEET

NO.

OF

TOTAL

SHEET

NO.

OF

TOTAL

Pugmill & Silo

A3



Conveyor

The conveyor is constructed in 3 latticed angle sections , the tail section includes a generous 12m³ feed hopper and the head section includes the conveyor drive, consisting of twin Sauer-Danfoss hydraulic motors coupled to a rubber lagged drive pulley

Diesel-Hydraulic Power Unit

The conveyor is powered by a 90kw liquid cooled Diesel Engine coupled to a hydraulic pump giving sufficient oil flow to drive the conveyor at maximum output, to provide the drive for the Pug Head, to operate the crawler tracks, and to operate the various hydraulic cylinders

Undercarriage

The undercarriage consists of the hydraulically operated crawler tracks together with an adjustable support trestle arrangement, which allows variation in both feed and discharge heights

Pug mill

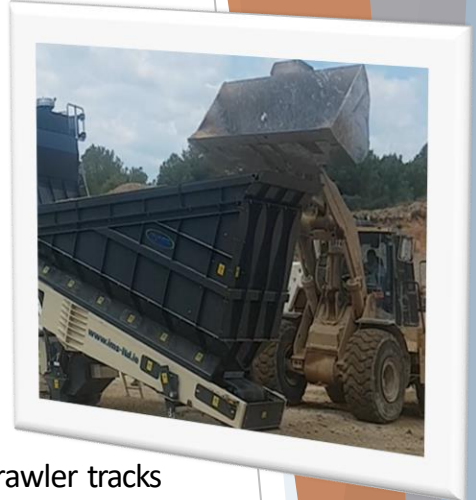
The Pugmill is designed with Twin Mixer shafts for anti-surfing and high production material blending. Each shaft is fitted with replaceable 500 grade Paddle tips rotatable through 180° to equalize wear. The Pugmill drive consists of a hydraulic motor directly coupled to a Chain Final Drive to give fixed output speed of 470rpm.

Hydraulic Folding Mechanism

The folding mechanism of the conveyor head and tail sections allow for quick site set up and provides a flexible approach to transport of the unit. The hydraulic folding is designed so that the hydraulic cylinder piston rods are fully protected when the machine is operational

Emergency Stop System

Every PM1050-16TB Track Pugmill unit is equipped from the factory with an emergency stop system that will render the plant inoperable when activated, providing added safety for the operator.





Standard Features

- Crawler Track Movement with Dog Lead Control
- 90 kw Diesel-Hydraulic Drive
- 1050mm (42") wide 3 ply belt
- Hydraulic Folding on Pugmill
- Hydraulic Folding of Head Section
- Hydraulic Raise and Lower
- Hydraulic Adjustment of Tail Section for transport on Low Loader
- Water Header Tank
- Additive Chute
- Wash facility for Pugmill Mixer

Volume Range: 50-500tph
Additive Range: 1%-20%*

Options

- Detachable Cement Weigh Hopper
- PLC System capable of a precision additives, multiple recipe function
- Dual Power: Electric & Diesel / Hydraulic Power Unit
- Hopper Hardox Wearplates
- Remote Start/Stop
- Tier 3 Engine ROW
- Tier 4 Engine USA
- Tier 5 Engine- EC and UK
- Static Pugmill, all electric



* Dependant on Volume



Specifications

| | |
|-------------------------|---|
| Operational Length | 18M" (60') |
| Operational Height | 5M" (16'4") |
| Loading Height | 2.87M (9' 6") |
| Hydraulic Tank Capacity | 377 l (83 gallon) |
| Diesel Fuel Capacity | 216 l (48 gallon) |
| Engine | four Cylinder Liquid Cooled |
| Transport Width | 2.25M (7' 4") |
| Transport Height | 3.5M (11' 6") Low Loader 2.546M (8' 4") Container |
| Transport Length | 13.5M (44' 3") Low Loader 12.0M (39' 4") Container |
| Total Weight | 19680 kgs (43296 lbs) |



Due to Irish Manufacturing Services Limited's policy of continuing product improvements, Specifications are subject to change without notice or obligation. No representation is made that the products depicted herein comply with any laws, codes, rules, regulations or standards. Compliance is the responsibility of the user. Additional safety equipment may be required by the particular location and application of product.

Irish Manufacturing Services Limited

34 Dunroe Road, Clogher, Co. Tyrone, N. Ireland BT76 0DZ

Tel. +44 (0)28 8554 9656 E-mail info@ims-ltd.ie website; www.ims-ltd.ie



PM1200-20TB

Track Blender Pugmill



 **YouTube**

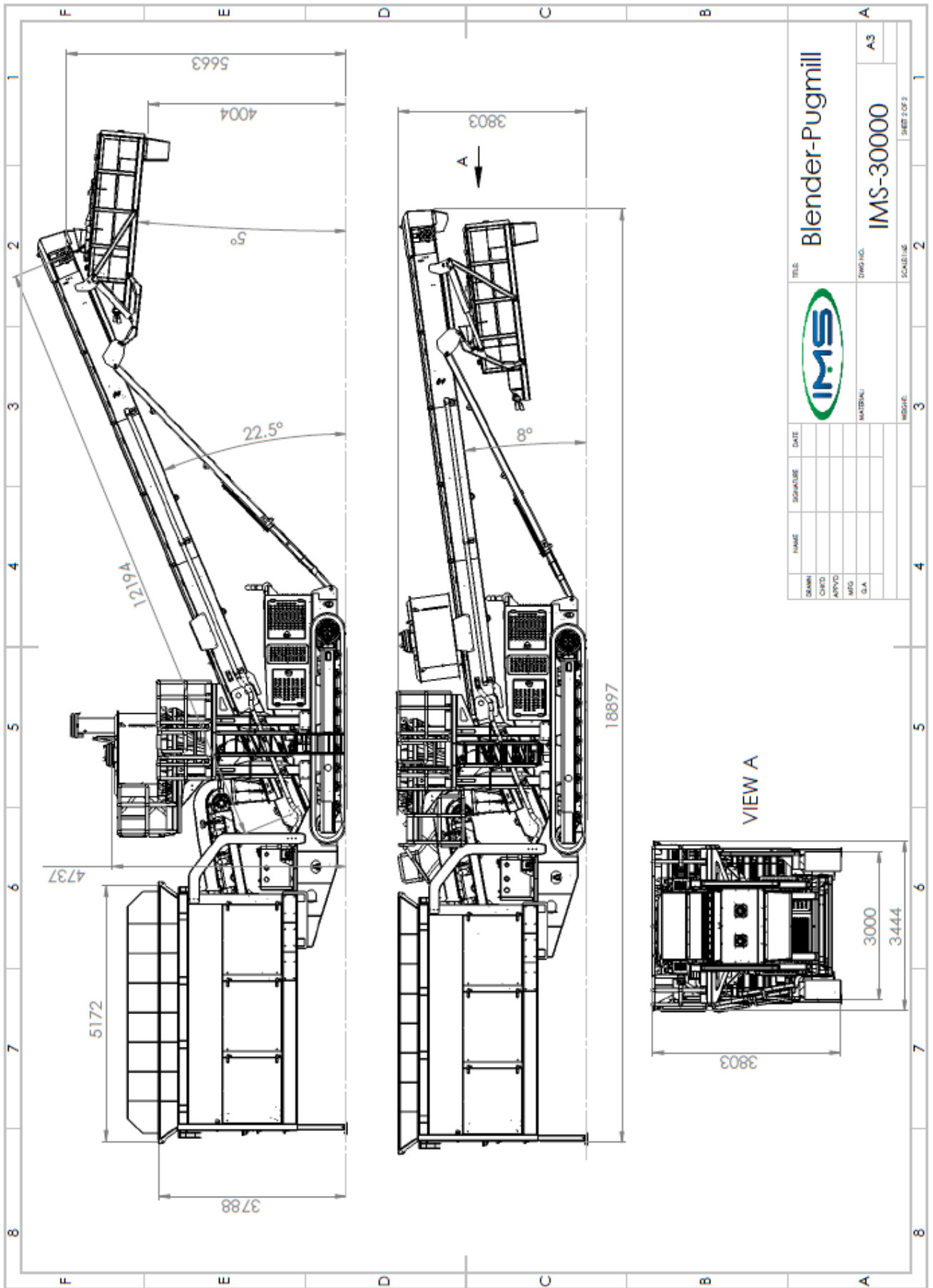
SEARCH

IMS PUGMILL



The PM1200-20TB, the ideal solution for jobs that require high production material blending and mixing with the added bonus of a stockpiling facility. Two variable speed belt feeder, cement weigh hopper, option of additional weigh hopper, liquid additive and various options on mixing shaft design. Precise PLC Control. Ideal for roadbase and RCC.





| | | | | | |
|-------------|------|-----------------|-----------|---------------|--|
| TITLE | | Blender-Pugmill | | SHEET NO. 2 | |
| DRAWING NO. | | IMS-30000 | | SHEET TOTAL 1 | |
| MATERIAL | | | | SCALE 1:1 | |
| DESIGN | DATE | NAME | SIGNATURE | DATE | |
| CHECKED | | | | | |
| APPROVED | | | | | |
| REV. | | | | | |
| DRAWN | | | | | |

Blender-Pugmill



IMS-30000

VIEW A

4737

5172

3788

12194

22.5°

5°

5663

4004

A

3803

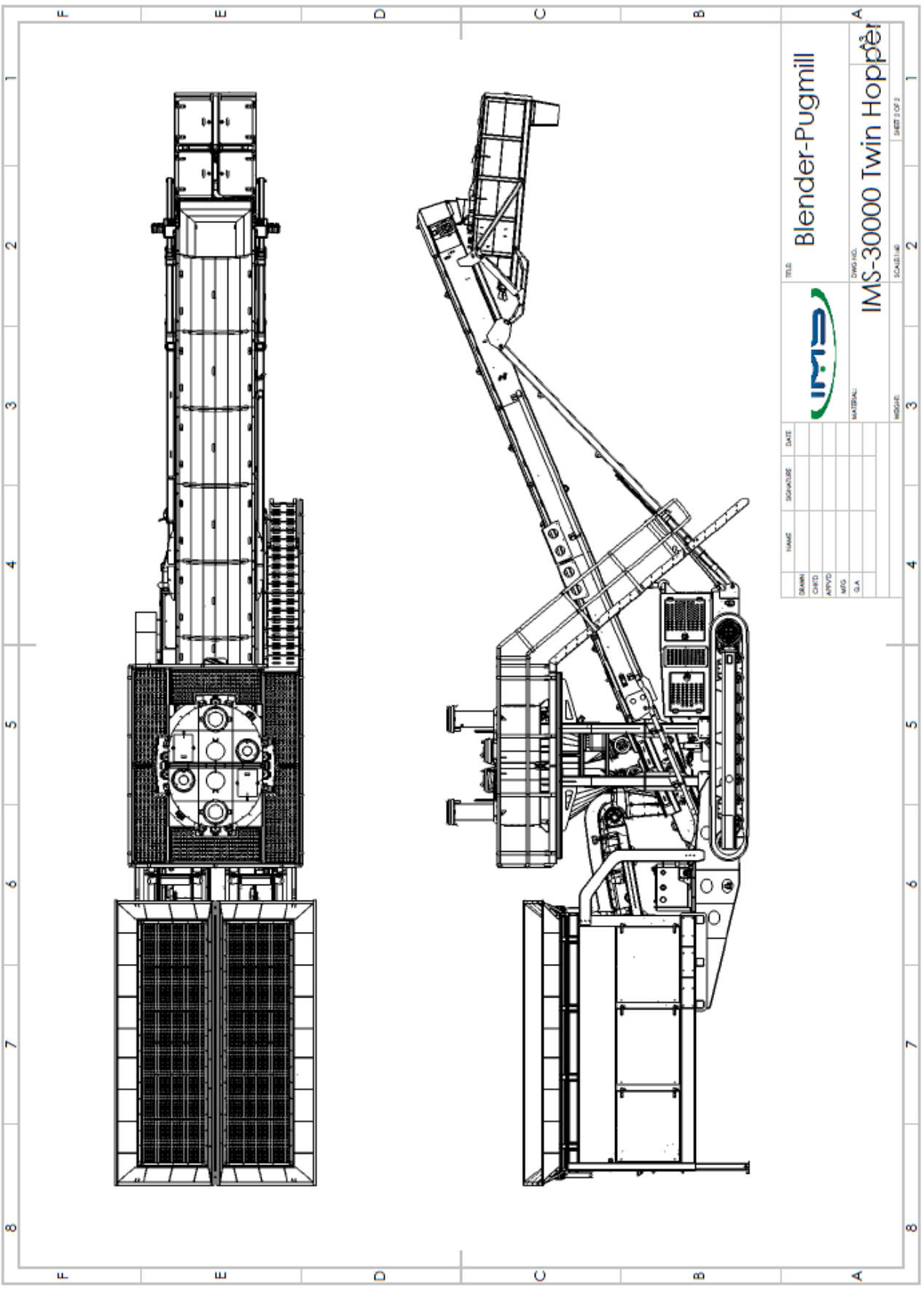
8°

18897

3803

3000

3444



| | | | |
|-------------|------|-----------------------|------|
| DESIGNER | NAME | SIGNATURE | DATE |
| CHECKED | | | |
| APPROVED | | | |
| W.D. | | | |
| D.A. | | | |
| TITLE | | Blender-Pugmill | |
| DRAWING NO. | | IMS-30000 Twin Hopper | |
| MATERIAL | | IMSA | |
| MODULE | | MODULE | |
| SHEET NO. 2 | | SHEET TOTAL 2 | |



Standard Features

Twin Belt Load Sensitive Belt Feeder Hopper both hoppers with 12m³ capacity

3m³ Cement Weigh Hopper Surrounding walkway, options available

Twin Mixing Shaft Pugbox with interchangeable shafts to suit various applications including RCC

Liquid Additive

Precise PLC Control System

Caterpillar 168kW Diesel Engine

Dust Covers

Walkway and Viewing Platform

Load Responsive Hydraulic System

4m Discharge Height

Options

Twin Weigh Hopper System

Vibrating Tipping Grid

RCC Pugbox





BP1200-9TB

Two Bin Mobile
Blending Plant



 YouTube

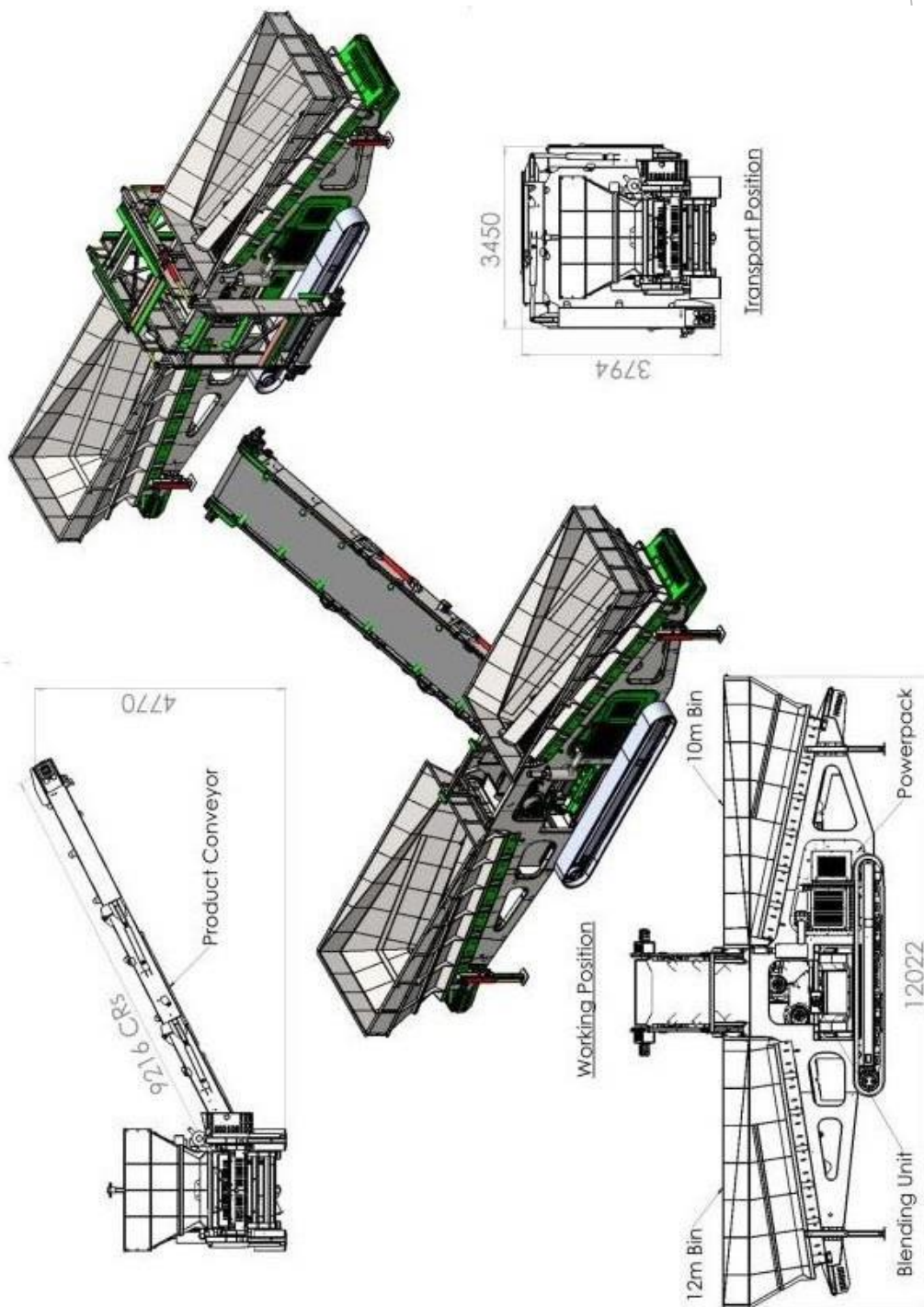
SEARCH

IMS TRACK BLENDING PLANT

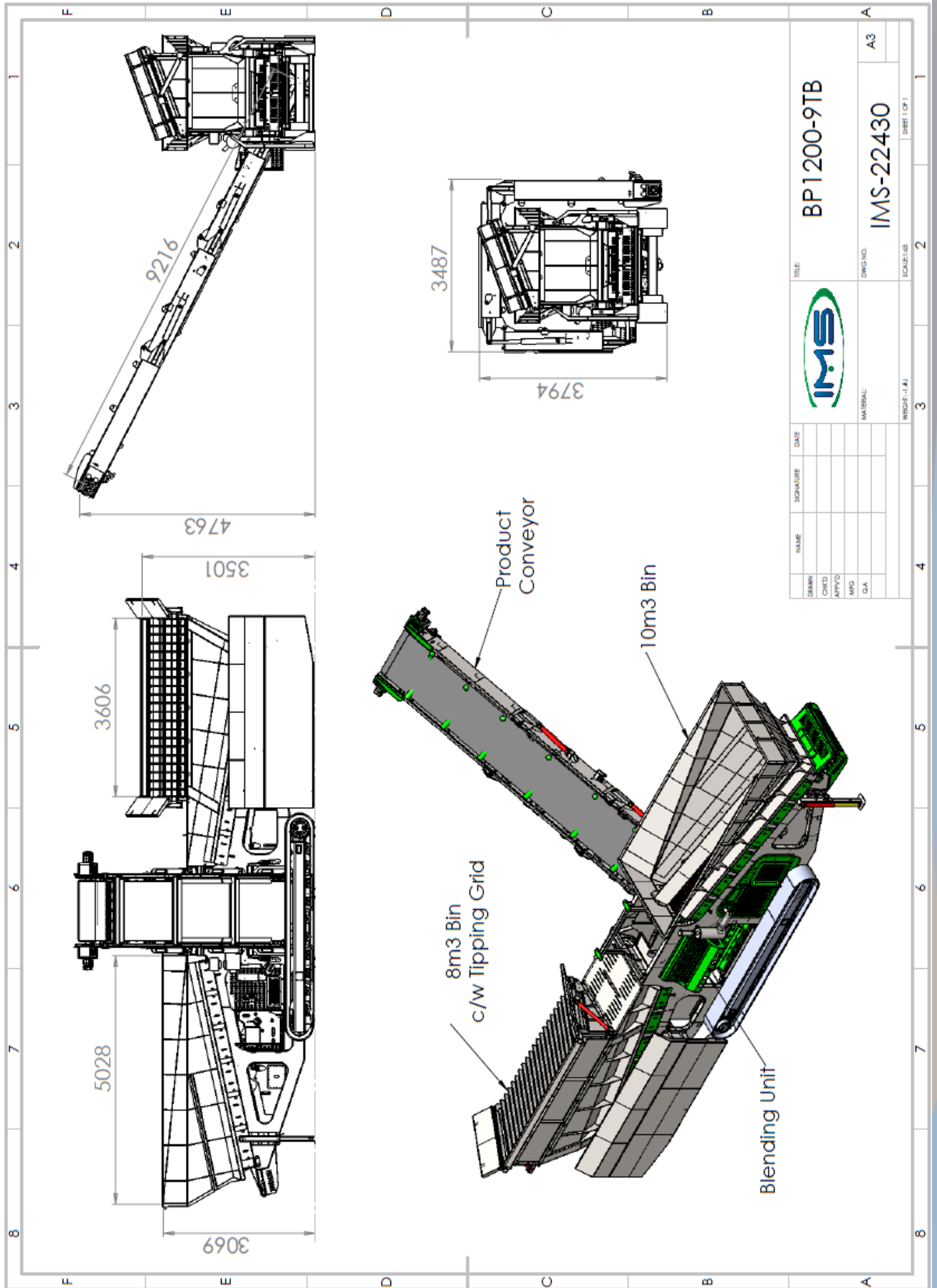




The BP1200-9TB Mobile Blender has been developed by IMS to meet the many applications where blending of material is essential. It can be used in applications where high volumes are required and is capable of producing up to 1000tph of blended material. Where more refined mixing is required, the unit is equipped with a mixing chamber with rotating mixer shaft to thoroughly blend mulch, topsoil, sand, etc. for use in lawn development, golf courses, and similar applications



Tipping Grid Option



Feed Hoppers

12cbm and 10cbm capacity feed hoppers located adjacent to each other to accept material from loading shovels. Hoppers fitted with 1000mm wide belt feeders placed strategically to allow discharge from 10cbm hopper to feed directly on top of discharge from 12cbm hopper. Both Feeder Belts equipped with variable speed control to allow operator to define material ratio from each bin.

Undercarriage

The undercarriage consists of a robust modular type chassis fitted with 4500mm long crawler tracks. 4 No. Hydraulically operated support legs are provided to the 4 corners of the chassis to ensure stability when operational

Discharge Conveyor

1200mm wide x 9.2m long Discharge Conveyor capable of handling up to 1000tph of blended material. Conveyor fitted with heavy duty belt and driven with 2 OMV630 hydraulic motors

Power Unit

Unit powered by a Diesel Engine with multiple hydraulic pumps to provide oil flow for the various functions. Power unit is adequately enclosed in suitable canopy with oil cooler and airflow to control the temperature inside the enclosure. Diesel and hydraulic tanks located adjacent to the Power Unit

Mixer/Shredder Unit

A hydraulic operated single shaft Mixer/Shredder unit is located centrally to accept the discharge from both feeders. This Mixer/Shredder is used when more refined mixing is required but can be moved out of line by hydraulic cylinder when large volume output is required

Controls

All the controls are centrally located and are easy accessible for the operator. The controls include the Engine Starter Panel, the solenoid engagement switches, the manual controls for the hydraulic cylinders, and flow control operation.

Emergency Stop System

Every BP1200-9TB track Conveyor is equipped from the factory with an emergency stop system that will render the plant inoperable when activated, providing added safety for the operator



Standard Features

- 12m³ and 10m³ Feed Hoppers
- Variable Speed Belt Feeders
- Crawler Track Movement
- 90kw Diesel Hydraulic Power Unit Engine
- Remote Stop Start
- 1200mm (48") wide Discharge Conveyor
- Hydraulic Folding of Conveyor for Transport
- Hydraulic Support Legs for Operational Stability
- Ultrasonic Run Empty Sensor, Flashing Beacon System
- Pull Cord Emergency Stops



Options

- Hydraulic Tipping Grid
- Dust Covers over Discharge Conveyor
- Belt Scales Options
- Hardox Wareplates in Hoppers
- Viewing Platform
- Cement Additive
- Liquid Additive





Specifications

| | |
|-------------------------|---|
| Operational length | 12.02M (40') |
| Operational height | 4.77M (15' 8") |
| Loading height | 3.1M (10' 2") |
| Hydraulic tank capacity | 650 l (143 gallon) |
| Diesel fuel capacity | 450l (100 gallon) |
| Engine | Caterpillar four cylinder liquid cooled |
| Transport width | 3.45M (11' 4") |
| Transport height | 3.8 M (12' 5") |
| Transport length | 12.02M (40') |
| Total weight | 19400 kgs (42770 lbs) |



Due to Irish Manufacturing Services Limited's policy of continuing product improvements, Specifications are subject to change without notice or obligation. No representation is made that the products depicted herein comply with any laws, codes, rules, regulations or standards. Compliance is the responsibility of the user. Additional safety equipment may be required by the particular location and application of product.

Irish Manufacturing Services Limited

34 Dunroe Road, Clogher, Co. Tyrone, N. Ireland BT76 0DZ

Tel. +44 (0)28 8554 9656 E-mail info@ims-ltd.ie website; www.ims-ltd.ie



BP1200-48TB

Four Bin Electric
Mobile Blending Plant



 YouTube

SEARCH

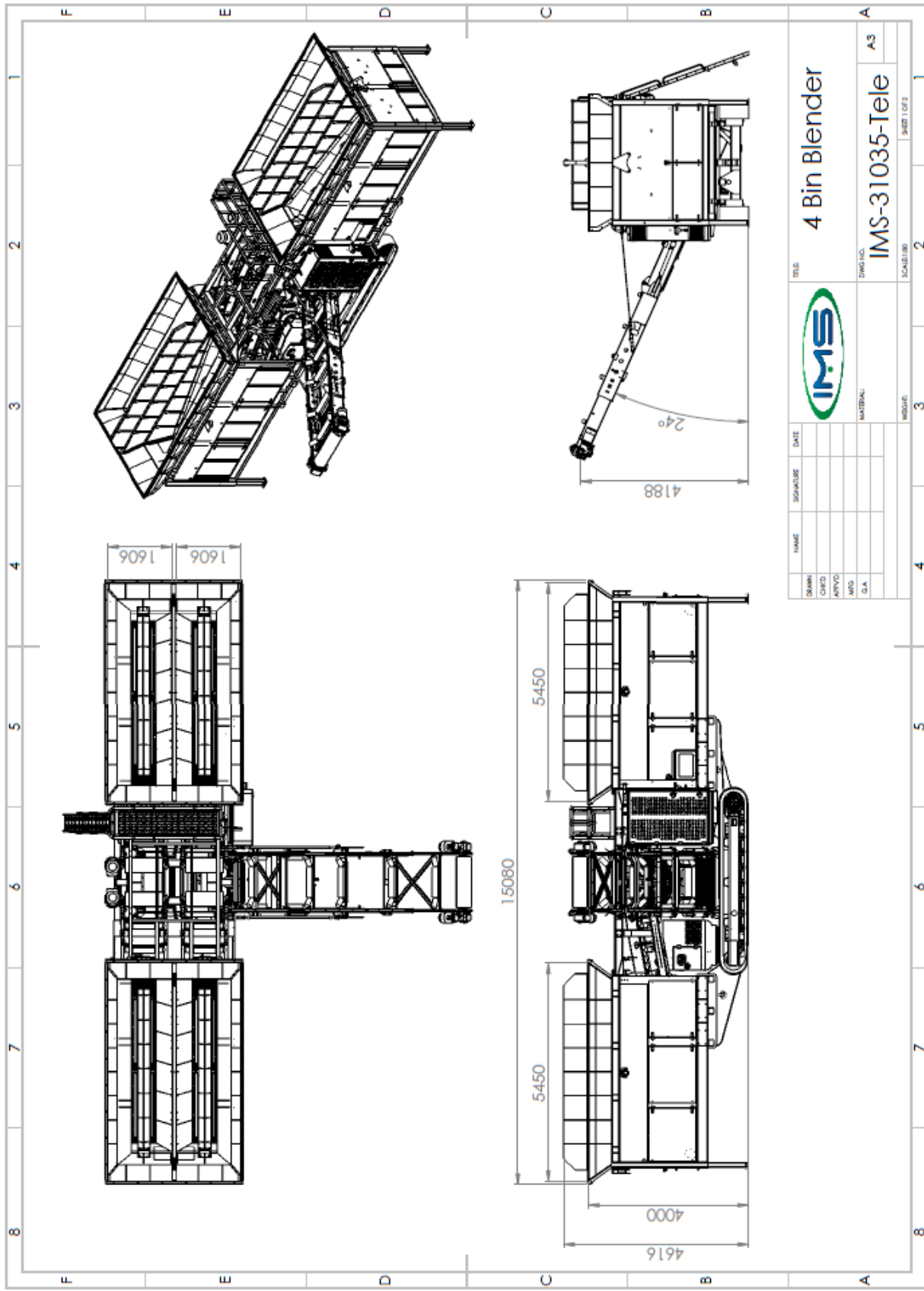
IMS TRACK BLENDING PLANT





The BP1200-48TB electric four-hopper (each holds 12m³ of material) tracked blender. The BP1200-48TB is powered by a Cat C7 generator that can be connected to mains power and can drive a 24m radial stacker for extra stockpile capacity. The Nord electric gear drive motors allow for a wide range of accurate speeds to suit low-percentage blends.





4 Bin Blender

DRWG. NO. **IMS-31035-Tele** A3

SCALE: 1:30 SHEET 1 OF 2

| NAME | SIGNATURE | DATE |
|------|-----------|------|
| | | |
| | | |
| | | |
| | | |
| | | |

| SCALE | DATE | BY | CHKD | APP'D | INFO | CLA |
|-------|------|----|------|-------|------|-----|
| | | | | | | |

Feed Hoppers

Four 12cbm hoppers located adjacent to each other to accept material from loading shovels. Hoppers fitted with 900mm wide belt. All Feeder Belts equipped with variable speed control to allow operator to define material ratio from each bin. Electric Nord Gear Drive Motors.

Undercarriage

The undercarriage consists of a robust modular type chassis fitted with 4500mm long crawler tracks. 4 No. Hydraulically operated support legs are provided to the 4 corners of the chassis to ensure stability when operational

Discharge Conveyor

1200mm wide x 9.2m long Discharge Conveyor capable of handling up to 1000tph of blended material. Conveyor fitted with heavy duty belt and driven with 2no Electric motors

Power Unit

Unit powered by a Caterpillar C7.1 Genset with hydraulic power pack for hydraulic functions. Power unit is adequately enclosed in suitable canopy with oil cooler and airflow to control the temperature inside the enclosure. Diesel and hydraulic tanks located adjacent to the Power Unit.

Controls

All the controls are centrally located and are easy accessible for the operator. The controls include the AC to control the generator and all belts, the AC panel can be wired to mains electrical also, there are manual controls for the hydraulic cylinders, and flow control operation.

Emergency Stop System

Every BP1200-9TB track Conveyor is equipped from the factory with an emergency stop system that will render the plant inoperable when activated, providing added safety for the operator



Standard Features

4no 12m³ Feed Hoppers

Variable Speed Belt Feeders

Crawler Track Movement

Cat C7.1 Generator

Remote Stop Start

1200mm (48") wide Discharge Conveyor

Telescopic Folding of Conveyor for Transport

Hydraulic Support Legs for Operational Stability

Ultrasonic Run Empty Sensor, Flashing Beacon System

Pull Cord Emergency Stops

Options

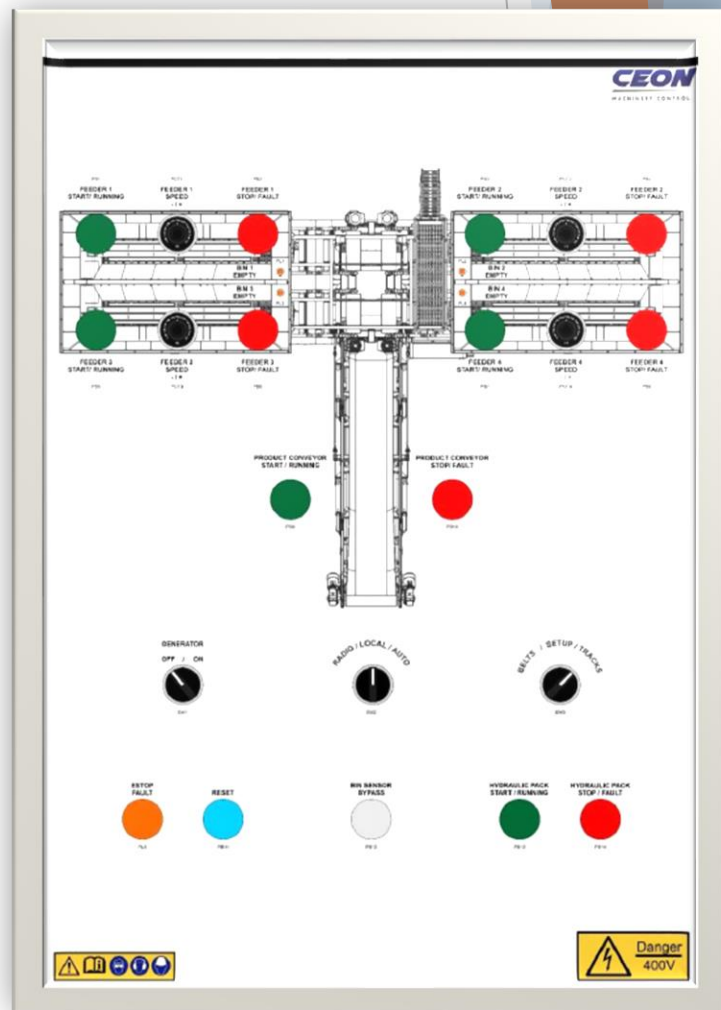
Hydraulic Tipping Vibrating Grid Grid

Dust Covers over Discharge Conveyor

Belt Scales Options

Hardox Wareplates in Hoppers

Centralised Mixing Chamber

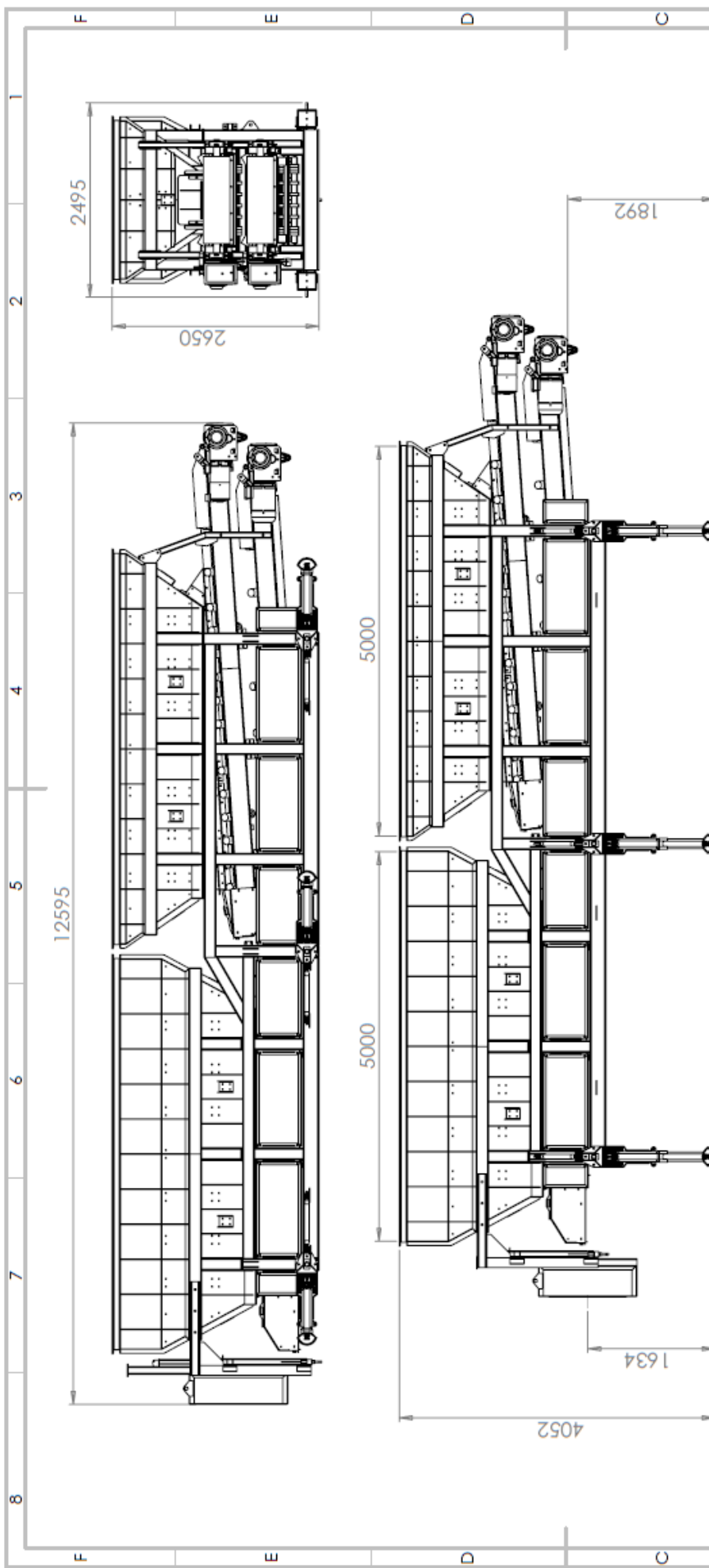





BP914-2BS

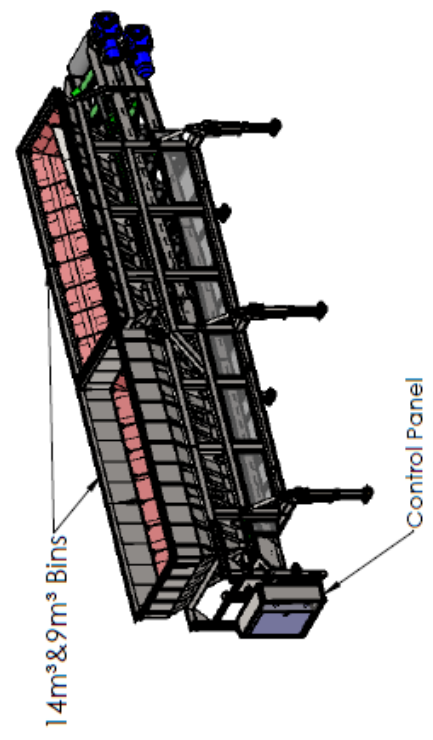
2 Bin Static Blending Plant





| ITEM NO. | PART NUMBER | DESCRIPTION | Transport/Qty. |
|----------|-------------|---------------------|----------------|
| 1 | IMS-25230 | Frame Assy | 1 |
| 2 | IMS-25432 | Conveyor No1 | 1 |
| 3 | IMS-25211 | Conveyor No2 | 1 |
| 4 | IMS-25217 | Hopper No1 | 1 |
| 5 | IMS-25225 | Hopper No2 | 1 |
| 6 | IMS-25439 | Control Panel Mount | 1 |

| | | | |
|---|--|--------------|----|
| DRAWN | | DATE | |
| CHECKED | | | |
| APPROVED | | | |
| MFG | | | |
| QA | | | |
|  | | | |
| Blending Bins | | | |
| MATERIAL | | DWG NO. | A3 |
| | | IMS-25200 | |
| WEIGHT | | SCALE | 1 |
| | | 2 | |
| | | SHEET 1 OF 1 | |



2 x Feed Hoppers constructed from 6mm MS plate. Hopper 1 has a capacity of 10 cubic Metres and Hopper 2 has a capacity of 14 cubic Metres. Both Hoppers are 5m long at Feed point to facilitate Loading Shovel. Discharge from Hoppers via 1050mm wide Variable Speed Belt Feeders with adjustable opening to control material feed. Feeders driven by electric geared motor close coupled to rubber lagged drive pulleys. Feeder fitted with heavy duty belt, impact rollers and variable speed control. Variable Speed Control facilitated by Inverters in the Electric Control Panel.

Complete unit to be mounted in modular type support framework with suitable lifting points

Electrical Control Panel mounted in folded plate type enclosure. Panel to include start/stop controls for Feeders and to include inverters for controlling speed of Belt Feeders. Additional space to be left for the option of Belt Weighers and controls for Discharge Conveyor.

Low Level Sensors are fitted in each Hopper to monitor the level of material. When the sensor is triggered, both Belt Feeders will stop simultaneously.

Emergency Stop System. The BP914-2BS is supplied with an emergency stop system which will render the machine inoperable when activated.

Guarding. All guarding of machines is carried out to the latest European standards and consequently the machine is labelled with the CE mark



OPTIONS

TIPPING GRID

Each Hopper can be fitted with a 3.6m long Hydraulic Tipping Grid. Bar spacing to be set at 75mm. Wing plates to be added to increase the width to 4300mm. Blanking plates to be added to top of Hoppers to close the additional space. Grids operated by 11kw electric hydraulic Power Pack with Remote control for Tipping function

BELT SCALE

Each Feeder can be fitted with a Mechtronics Belt Scale to enable precise weight of material transferred from each hopper

WEAR LINERS

Replaceable 6mm Hardox Wear Liners can be fitted to both Hoppers to assist in abrasive applications

DISCHARGE CONVEYOR

20m Electrical conveyor with 1050mm Belt

AUGER MIXER

Rotavator to give the elements a rough mix

